

GALILEI

Be cool, Be alive.

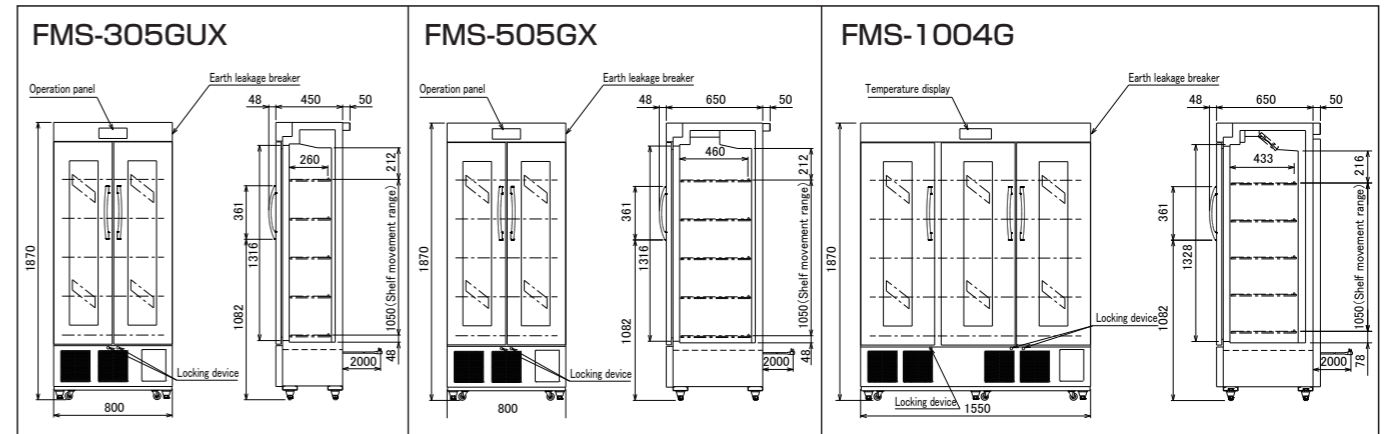
Medical cool box MediFridge

Eco-friendly non-fluorocarbon refrigerant is used.

The EC (Eco Control) mode for wide set temperature range or
The HC (High Control) mode for high-accuracy temperature control can be selected.

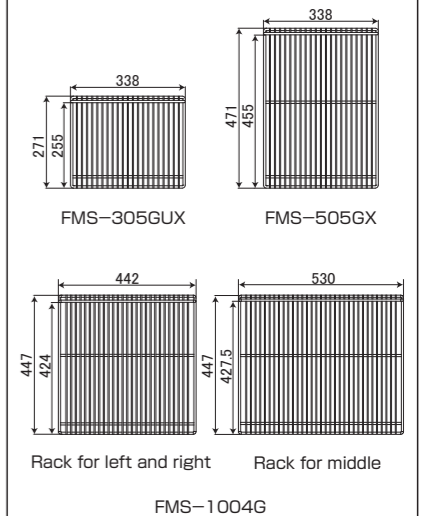


Specifications



Model name	FMS-305GUX	FMS-505GX	FMS-1004G
Size	Outer shape (mm) (width X depth X height) 800x450(548)x1870 Inner shape (mm) (width X depth X height) 700x285x1337	800x650(748)x1870 700x485x1337	1550x650(748)x1870 1450x460x1337
Effective inner capacity (L)	300	500	1020
Product weight (kg)	100	112	198
Material	Exterior: Coated steel plate Interior: Coated steel plate, collar steel plate	Coated steel plate, collar steel plate	
Door	Surface: coated steel plate, rear face: coated steel plate	Special double glass	Special double glass
Insulator	Magnet type 2 doors	Magnet type 3 doors	Magnet type 3 doors
Set temperature range	EC mode: 4°C (no load, ambient temperature -5 to 35°C) / HC mode: 2°C (no load, ambient temperature 1 to 30°C)	EC mode: 2 to 25°C / HC mode: 3 to 5°C	
Temperature fluctuation range	EC mode: 4°C (no load, ambient temperature -5 to 35°C) / HC mode: 2°C (no load, ambient temperature 1 to 30°C)		
Cooling system	Compressor nominal output: 140W	350W	350W
Refrigerant control method	Capillary tube		
Condenser	Wire tube type	Forced ventilation type finned tube type	
Cooler	Forced ventilation type finned tube type	Forced ventilation type finned tube type	
Refrigerant	R1234yf	R404A	
Temperature control	Microcomputer control, digital temperature indication		
Defrosting method	Automatic detection type cycle defrost		
Applicable breaker	Single-phase 100V 15A 50/60Hz		
Applicable outlet	Grounding bipolar 15A 125V		
Allowable voltage range (V)	90~110		
Electric properties	Cooling time (50/60Hz) Operating current (A) 2.4/2.4 Starting current (A) 20/20 Power consumption (W) 215/231 Power factor (PF) 89/97	2.4/2.4 20/20 219/234 91/98	4.9/4.9 18/17 460/480 94/98
Using ambient environment (°C)	-5~35°C 80% RH or lower		
Radiation amount (50/60Hz)	350/395W	355/390W	529/637W
Caster	Four swivel casters		
Accessories	10 shelves, key (one key for each door)		
Alarm contents	High temperature, cold temperature, and door opening warning, filter inspection sign, etc.		

Shelf dimensions (mm)



Precautions concerning facilities

The non-fluorocarbon products use flammable substances as refrigerant. Install the product in a place where the minimum installation floor area is secured to use the product safely even if the refrigerant leaks.



Flammable substances

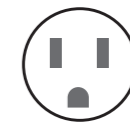


Minimum installation floor area $\geq 3.3\text{m}^2$

To ensure safety, Fukushima's products are compliant with the standards ⁽¹⁾ of the Japan Refrigeration and Air Conditioning Industry Association.

^{*1} Japan Refrigeration and Air Conditioning Industry Association JRA4078
"Safety function requirements in case of refrigerant leak of built-in type freezing-refrigerating equipment using flammable refrigerant"

Outlet shape



Single-phase 100V
grounding type
Bipolar 15A 125V



Be sure to use the outlet
with a grounding electrode.

GALILEI

Be cool, Be alive.



FUKUSHIMA GALILEI CO.LTD.

⚠ Safety precautions

- The products shown in this leaflet are for indoor use. Please use and store the products in places not exposed to rainwater.
- Read the "instruction manual" carefully before correct use of the product.
- Specifications and appearances are subject to change without notice for reform.
- The colors of products in this leaflet may be slightly different from the actual products due to print conditions.
- The prices of all products listed in this leaflet do not include consumption tax.
- "Precautions for use" label is affixed to products.
- Download the catalogs and specifications from:
URL <https://www.galilei.co.jp>

For inquiries about and ordering products made by Fukushima GALILEI Co, Ltd.

Head Office (Osaka)	Tel:81-6-6477-2011	2-6-18, Takeshima, Nishi Yodogawa-ku, Osaka, Japan
Higashi Nihon Office (Tokyo)	Tel:81-3-6361-1956	2-1-3, Bakuro-chou, Nihonbashi, Tokyo, Japan
FUKUSHIMA GALILEI (H.K.) CO., LTD.	Tel:852-2885-5679	Unit 903, 9/F, Westlands Centre, 20 Westlands Road, Quarry Bay, Hong Kong
FUKUSHIMA GALILEI SINGAPORE PTE.LTD.	Tel:65-6271-0460	1003 Bukit Merah Central #02-06 Singapore 159836
FUKUSHIMA GALILEI MALAYSIA SDN.BHD.	Tel:60-3-2181-1034	Lot 6.01, 6th Floor Wisma Central Box617, Jalan Ampang 50450 Kuala Lumpur, Malaysia
FUKUSHIMA GALILEI (THAILAND) CO., LTD.	Tel: 66-2-2583-690	16 Asoko Court Gnd Fl, Room 2G, Sukhumvit 21 (Asoko) Rd, Klongtoey-Nua, Wattana, Bangkok 10110
FUKUSHIMA GALILEI VIETNAM CO.,LTD	Tel:84-28-3933-3628	Floor 9, PVC Sai Gon, 11 Bis Nguyen Gia Thieu, Ward 6, District 3, HCMC, Vietnam
FUKUSHIMA GALILEI VIETNAM CO.,LTD (HANOI BRANCH)	Tel:84-24-3755-6000	8F TID Centre Building, 4 Lieu Giai Street, Cong Vi Ward, Ba Dinh District, Hanoi Vietnam.
FUKUSHIMA GALILEI (SHANGHAI) CO.,LTD.	Tel:86-21-6248-1512	Room A316.3th floor, No.658 Jinzhong Road, Changning District, Shanghai 200335
FUKUSHIMA GALILEI TAIWAN CO., LTD.	Tel:886-2-2521-9810	Rm. 5, 12F, No.112, Sec. 2, Zhongshan N. Rd., Zhongshan Dist., Taipei City 10449, Taiwan (R.O.C.)
FUKUSHIMA GALILEI MYANMAR CO.LTD.		No.(262), 12th Street Ngwe Kyar Yan 3 Quarter South Okkalapa Township, Yangon, Myanmar
GALILEI(THAILAND) CO.,LTD.	Tel:66-22-583-690	60/105 Moo 3, Mabyangorn Sub-District, Pluakdaeng District, Rayong 21140,Thailand
FUKUSHIMA GALILEI CAMBODIA CO.LTD.	Tel:855-92-407-957	Executive Room#2E6,The ICON Professional Building,216 Norodom Boulevard,Tonle Bassac,Chamkamon,Phnom Penh,Cambodia.
PT. FUKUSHIMA GALILEI INDONESIA	Tel:62-21-2709-5619	Ruko Wisteria 1 Lt.2 Jl. Panglima Polim No. 7A,MelawaiKec.Kebayoran Baru,Jakarta Selatan 12160,Indonesia
FUKUSHIMA GALILEI PHILIPPINE CORPORATION	Tel:63-917-679-0003	Unit 1715 One Park Drive 11th drive corner 9th Avenue, Bonifacio Global City Taguig City,Philippine



contact us

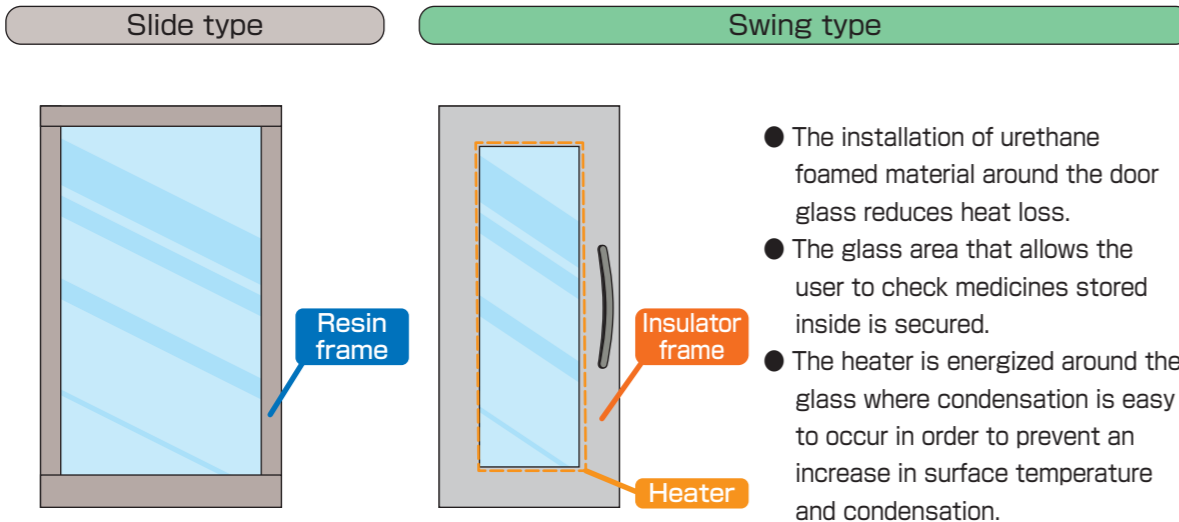
Description contents of
this leaflet are as of
December 2023.
(2312-00)G

Leaflet No.
MDP-161

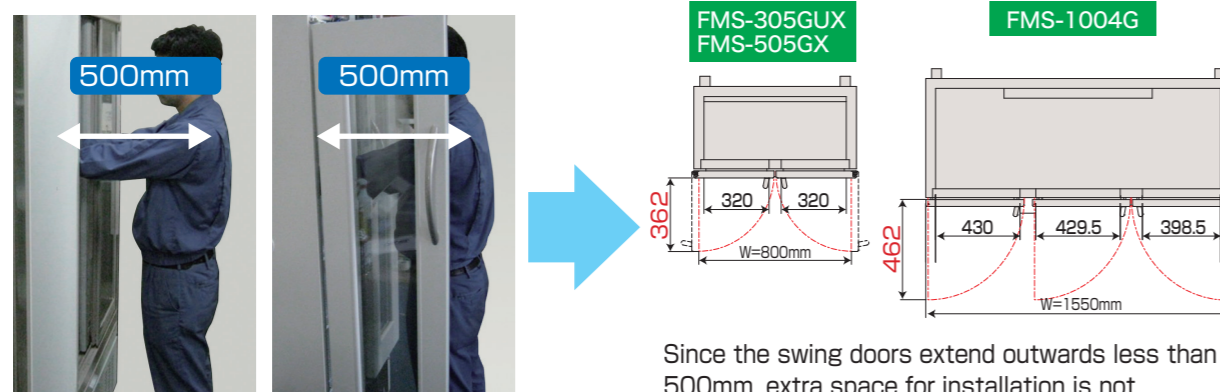
The swing doors allow enhanced usability and safe and secure cold storage environment.

Stable cold storage environment with little condensation

Difference of doors



Space saving



A minimum clearance of 500mm is required to take in and out stored items.

Taking out stored items.

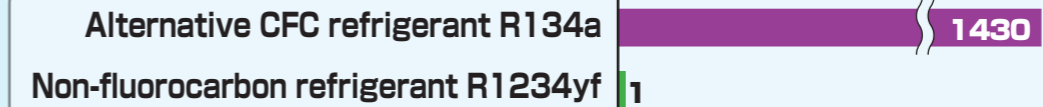


Features

Non-fluorocarbon refrigerant (FMS-305GUX and FMS-505GX)

The refrigerant is friendly to the global environment because it has low global warming potential. Also, the refrigerant does not fall within the scope of the Fluorocarbons Emission Control Act.

Comparison of global warming potential (GWP)

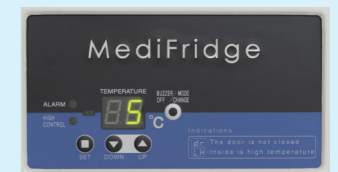


※The GWP numeric values are quoted from the Ministry of Economy, Trade and Industry Notification No. 54 and ISO5149-1.

Operating mode switching function

EC (Eco Control) mode

This mode allows a wide range of temperature setting from 2°C to 25°C. It allows the storage of not only cooling-requiring medicines but also ambient-temperature medicines.



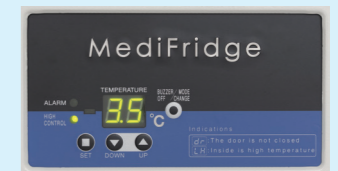
EC (Eco Control) mode
Indicated by the unit of 1°C

HC (High Control) mode

The set temperature can be selected from 3°C, 4°C, and 5°C.

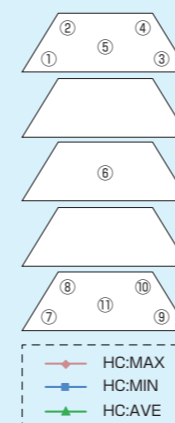
- Temperature distribution (within $\pm 1^\circ\text{C}$ from the set temperature)
- This mode reduces temperature fluctuation range and achieves more stable inner temperature.

This mode is optimal for storing medicines that require rigorous temperature control.

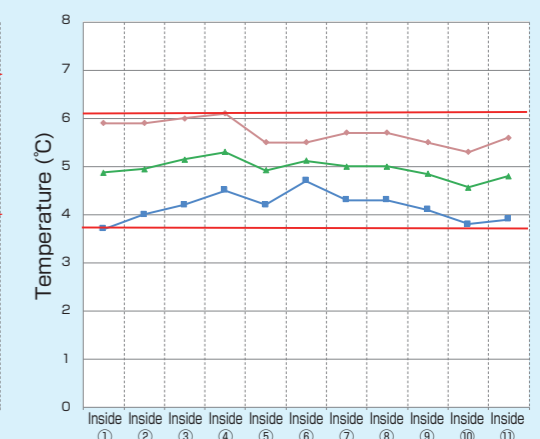
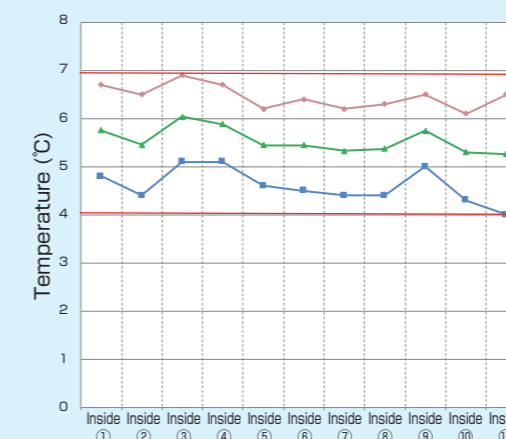


HC (High Control) mode
Indicates the temperature from 1°C to 7°C by the unit of 0.1°C.

Measurement points



Set temperature: 5°C FMS-305GUX



※Measurement conditions: ambient temperature 30°C, humidity 60%, no load, air temperature measurement at 9 points inside medial cool box
 ※Characteristic values may differ according to product, operation and set conditions.
 ※Each data are measured based on criterion of our company.

Lineup



FMS-305GUX^{※1}

Effective inner capacity **300L**

Outside dimensions : W800×D450(548)×H1,870mm
Inside dimensions : W700×D285×H1,337mm

※1 Fall prevention measures are required.



FMS-505GX

Effective inner capacity **500L**

Outside dimensions : W800×D650(748)×H1,870mm
Inside dimensions : W700×D485×H1,337mm



FMS-1004G

Effective inner capacity **1004L**

Outside dimensions : W1550×D650(748)×H1,870mm
Inside dimensions : W1450×D460×H1,337mm

Option

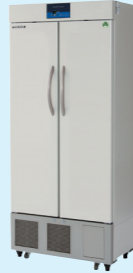
Light shield film

Shields ultraviolet and other light from the outside.
Can be used for medicines that need to be stored in a cool and dark place.



Glassless

※No additional cost is required.



Safety box

Large-size type
Outside dimensions:
W305×D214×H363mm
Weight:5.1kg

Miniature type
Outside dimensions:
W255×D150×H215mm
Weight:3.0kg



※Mounting brackets are separately required.

Thermo recorder

The history of inner temperature can be automatically recorded.
※Comes with one year's worth of recording paper (12 pieces).

Recording range
-10 to +44°C
(recording accuracy ±2°C)

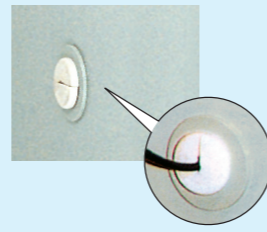


Temperature data logger



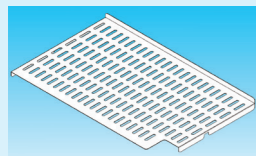
Measurement hole

The holes prevent a leakage of cold air when a sensor is inserted.



Punched plates

Optimal for putting small bottles.



Shelf

Select the shelves for both right and left side.

Provided with 4 shelf supports

Slide rack specification

The slide rack specification is convenient for loading and unloading chemicals and samples.

FMS-305GUX-505GX Right side
FMS-1004G Left side



Power outage warning buzzer kit

The cell battery type kit notifies power outage by buzzer if it occurs.

Alarm contact

Standard equipment

Casters



Four swivel casters make carry-in and relocation easy.

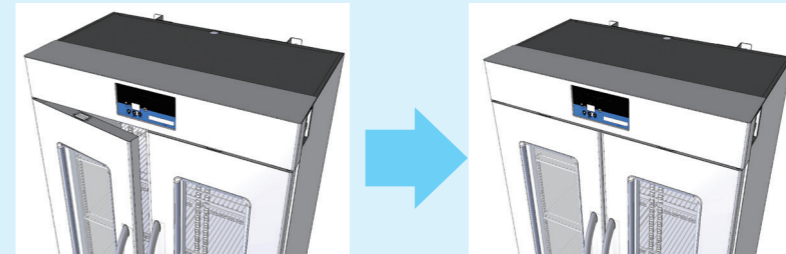
※FMS-1004G is equipped with six swivel casters.

Locking device



Individual key for each unit is used.

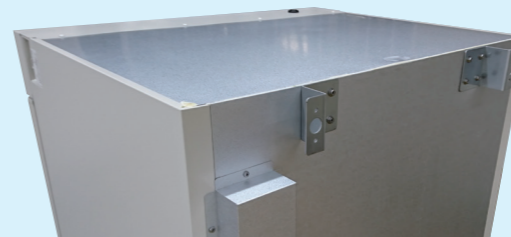
Prevent forgetting to close the doors.



The door will automatically close within the angle of 90° to prevent forgetting to close it.
The door sensor is equipped as standard, offering safe and secure storage environment.

Wall fixing bracket

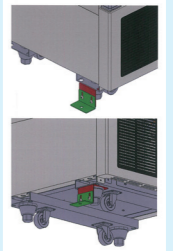
Take safety measures just in case



Option

Floor fixing bracket

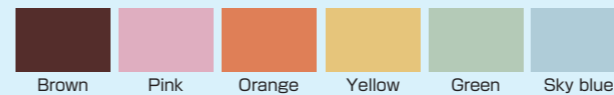
Set of 2 pieces



Selectable color variations

The color of your choice can be selected from 6 color variations.

In addition to the standard color (ivory), 6 colors (brown, pink, orange, yellow, green, and sky blue) are available.
The color of your choice can be selected from the color variations.



※The left shows reference colors. The reference colors may slightly differ from actual product colors.

※No additional cost is required if you have requested the color at the time of purchase.

Creating the space functionally

For total coordination of colors, the color of machine room panel and ceiling decoration part of the product can be selected according to internal appearance.

Zoning

Zoning by color makes recognition of each section easier. The use of color of the image that corresponds to the subject of medical treatment enables intuitive judgment and understanding.

Storage that can be recognized by reagents, chemicals and person in charge

The change of product colors by materials to be stored and persons in charge enables visual judgement and prevents mistake.



Validation support service

We prove and document the appropriateness of the quality of product performance at each stage of installation (IQ)/operation (OQ) and report it in writing.
We provide support so that customers can use our products safely for a long term.

Consultation

Plan document submission

IQ/OQ implementation

Report submission