



Send-you

To the next stage

Fukushima Refrigerated and  
Freezer Showcases

new  
Send-you  
Series

For further information or to order FUKUSHIMA products,  
please contact the following FUKUSHIMA representatives:  
URL <http://www.fukushima.co.jp>



SC-1109-C  
(1609-02)SG

# Send-you

Because everything is a gift from nature...  
Delivering nature's brilliance and beauty to you.

A dedication to freshness, an adoration of beauty, and giving thanks for the gifts from nature.

This is our heart and soul, born from the Japanese food culture that we have helped nurture.

This spirituality towards food is something that we as a specialized manufacturer want to continue to protect with our technology and know-how.

All food is born from the gifts of nature.

Fukushima showcases build a "place of bonding" between nature and man.

## The concept behind the naming of "Send-you"

In addition to implying the word "Send", that is to deliver, it also is similar in pronunciation to the Japanese word for freshness, "Sendo." These are the meanings that we have placed on the word, as well as to share and deliver this to everyone.

"You" is pronounced the same as the Japanese word for excellence and superiority, and this is the meaning we have placed on this word, signifying the quality of our products as a specialized manufacturer.



## CONTENTS

### Fukushima's Approach

Environmental Considerations	2
Energy Reduction and Conservation Efforts	4
Send-you Features	6
Lighting Effects	8
Color Variations	9
Options	10
New Product	12

### Remote type showcase

For fresh meat and fresh fish	14
For daily dish	28
For fruits and vegetables	32
For chilled foods, processed meats, dairy products, alcohol and eggs	38
For frozen foods and ice cream	48
Custom display cases	52
For convenience stores and small scale retail stores	54

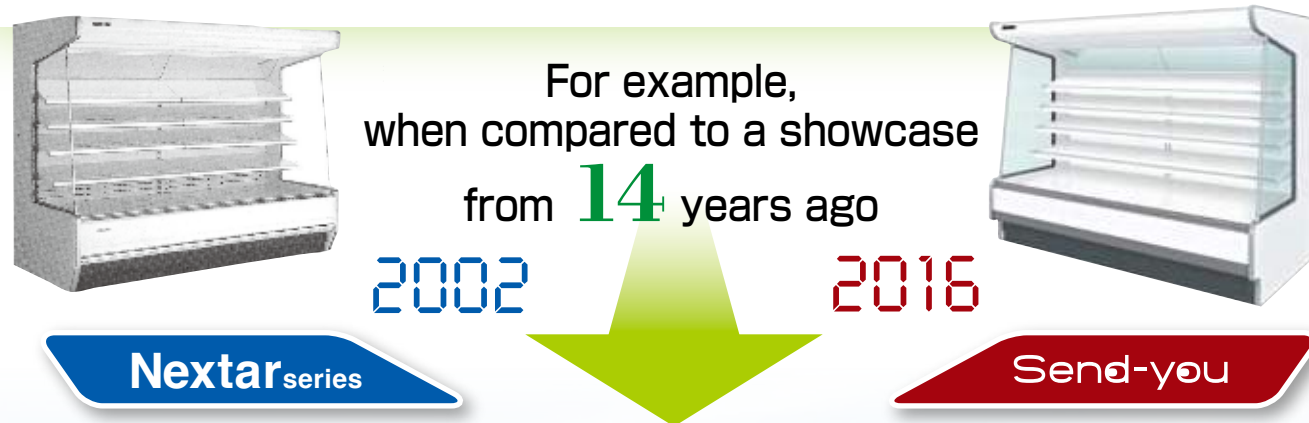
### Plug-In type showcase

IM series	58
ME series	62
AD series and Double temperature pass through showcase	65
KM and HM and IE series	66
MF and MRN series	68
Glass Door case	70
Equipment related to Service Corner	71



Fukushima aims to become a leading environmental company that contributes to the happiness of consumers.

Greatly reduces emissions of CO<sub>2</sub> greenhouse gases.



A reduction in annual CO<sub>2</sub> emissions of approximately **135t**

(When conventional Fukushima showcases from 10 years ago are replaced with Send-you showcases in a store with 500 tsubo (17,792 square feet) of floor space)

Equivalent to **9,600 cedar trees\***

\*Amount of CO<sub>2</sub> absorbed annually by 1 cedar tree: Calculated at 14kg

### Utilizing environmentally friendly refrigerants.

Refrigerant	R404A(Standard)
Refrigerant	R410A(Optional)

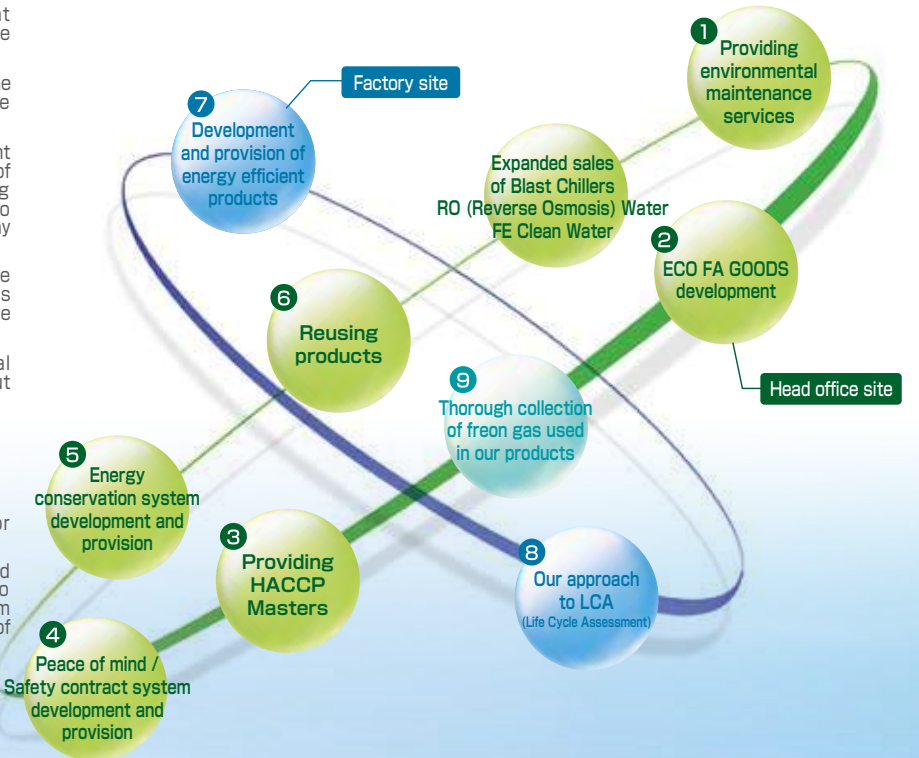
In addition, we can also accommodate customer requests for natural refrigerant (CO<sub>2</sub> refrigerant, ammonia, etc.) with no greenhouse gas emissions.

### Fukushima's Environmental Activities<Eco-tech>



Starting with "Safety=RO (Reverse Osmosis) Water, Blast", we have named technology that provides safety and peace of mind to consumers based on the concept of reducing burdens on the environment, <Eco-tech>. At Fukushima, we will continue to contribute to the improvement of consumer diets through our products, service and presentation abilities as well as promoting the realization of <Eco-tech> in order to serve and assist society.

- Maintenance services to optimize equipment operations as well as to reduce burdens on the environment and running costs
- Environmentally conscious goods that pursue the improvement of store and kitchen hygiene management
- A system that provides centralized management of operating conditions and temperature data of kitchen equipment. In addition to storing historical temperature data, the system also notifies you should the equipment experience any abnormal conditions
- A service centered around "S Net 24" (remote centralized management system) which provides temperature as well as equipment maintenance and management services.
- Energy services centered around ice thermal storage systems starting from the store layout planning phase
- Environmentally friendly "Re-shop" services (renovation and cleaning of stores)
- Energy efficient detached showcase Development of the Send-you series Promoting the conversion to inverters for internal motor showcases
- Promoting product development with reduced burden on the environment by taking into consideration raw material volume used from production to disposal as well as the amount of discarded material
- Thorough collection and disposal of freon gas according to law in order to protect the ozone layer

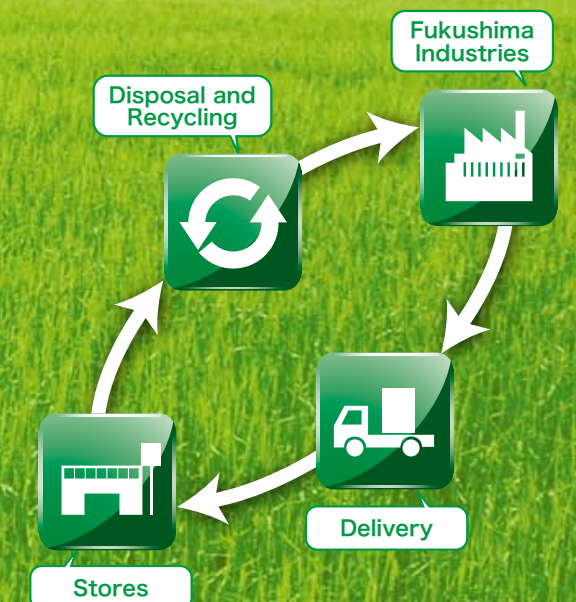


Dark green: Actions taken at head office site  
Blue: Actions taken at factory sites  
Light green: Actions taken by entire company

### Implementing LCA evaluations at the time of product design

As one method of objectively analyzing and evaluating the effect that products and services have on the environment for all related processes from the collection of raw materials to disposal, LCA (Life Cycle Assessment) has been adopted and implemented in a wide variety of fields such as the manufacturing of various products and recycling systems.

At Fukushima Industries, we have been able to objectively be aware of every process related to our refrigerated and freezer showcases from the acquisition of raw materials to delivery, use in stores as well as disposal and recycling by implementing the LCA evaluation method from the earliest stages of product development. Through LCA, we evaluate which step in the entire process flow has the most environmental load as well which recycling method has the least environmental load. These evaluation results are reflected in our operations through the selection of the recycling method with the least environmental load when promoting product recycling as well as in future product design and when constructing production systems.

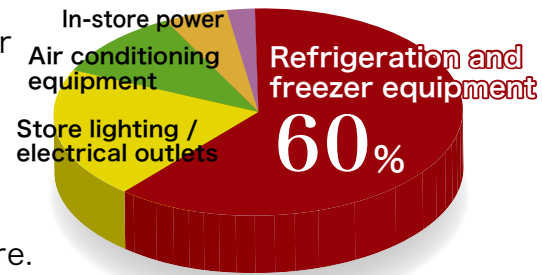




Send-you

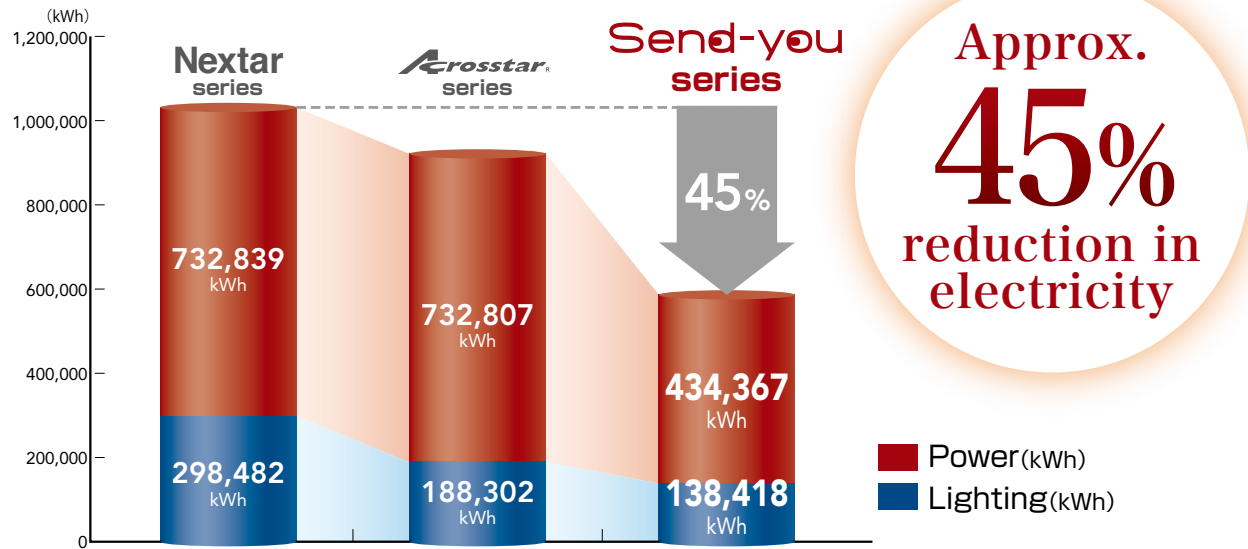
Fukushima has created unprecedented energy saving effects while protecting the freshness and beauty of the food.

Refrigerated and freezer showcases account for approximately 60% of the electricity used in a store. Switching energy saving refrigeration and freezer equipment is effective in reducing the amount of electricity used by the entire store.



\*Research conducted by Fukushima

By installing <Send-you>, in comparison to 10 years ago, refrigeration and freezer equipment electricity consumption can be reduced by approximately 43%.



Comparison of electricity consumption volume in a model store  
\*Calculations by Fukushima based on the store being open for 12 hours 500 tsubo (17,792 square feet) store space 50 showcase units

Multi-deck type

Approximately 15~20% energy savings by changing the airflow outlet position and revised honeycomb.



Semi multi-deck type

Double layer air curtain and a newly designed refrigeration unit resulting in 15~30% energy savings in comparison with conventional models.



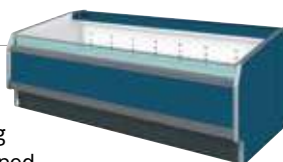
Freezer island type

Newly designed duct structure and refrigeration unit resulting in 15~40% energy savings in comparison with conventional models.



Serve-over type

Approximately 40~50% energy savings in comparison to conventional models by reviewing the air curtain and a newly designed refrigeration unit and duct structure.



Total Store Energy Management System

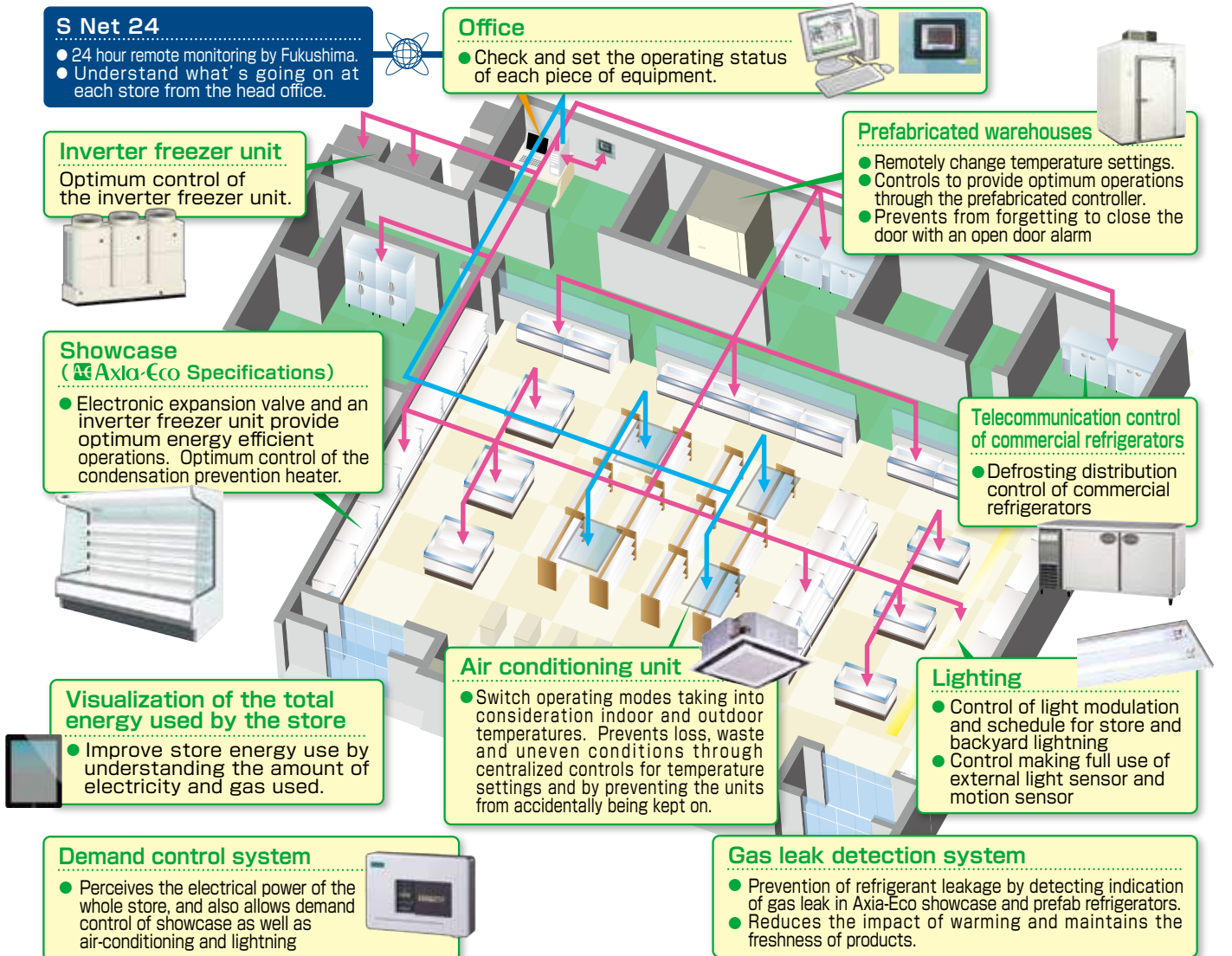
エネルギー・マネジメントシステム (ベムス・ユー) **Bems-you**

Power saving and energy saving measures for supermarkets thought by Fukushima

Refrigeration and cold storage equipment from which the most significant effects can be expected in energy saving measures. The energy saving measures thought by Fukushima as a professional manufacturer of those equipment are building total management system "Bems-you".

Bems-you Features

- Automatic control of energy saving equipment**  
While keeping the food fresh, the temperature of freezing and cooling refrigeration and air conditioning are managed by automatic control. Optimizing the energy of the entire building.
- Demand control**  
Control of the electrical equipment in such way that the demand value (moment of maximum power consumption) wished by our customers is not exceeded. Reduction of contract electricity fees by peak cut.
- Visualization of electrical power**  
Measuring the power usage of each equipment and the entire building. Optimizing the configuration of each device, and implementing total energy management.



Received the Excellence Award at the 16th Ozone Layer Protection and Global Warming Prevention Award Program organized by NIKKAN KOGYO SHIMBUN.



# Send-you

## To the next stage

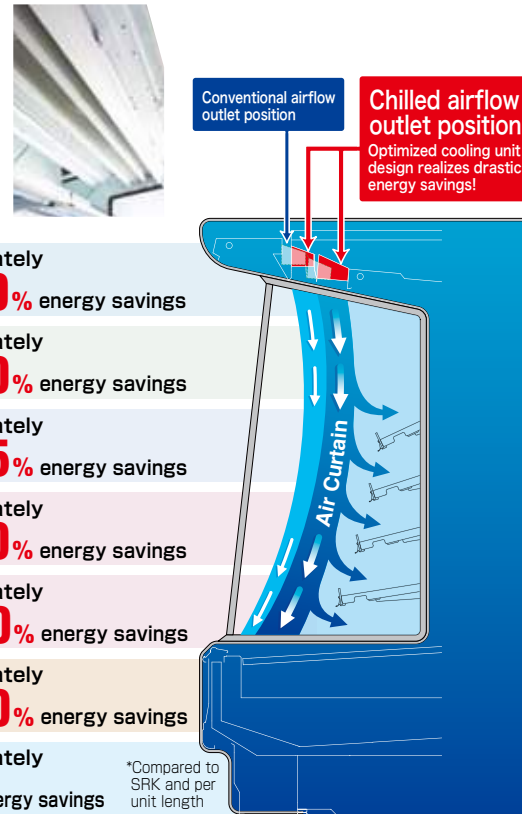
### Fukushima Refrigerated and Freezer Showcases



T10 fluorescent lamp tube is the standard for internal lighting of the Send-you series

### Point Newly designed air curtains

Approximately **15~50%** energy savings by changing the airflow outlet position and increasing the size of the honeycomb structure.



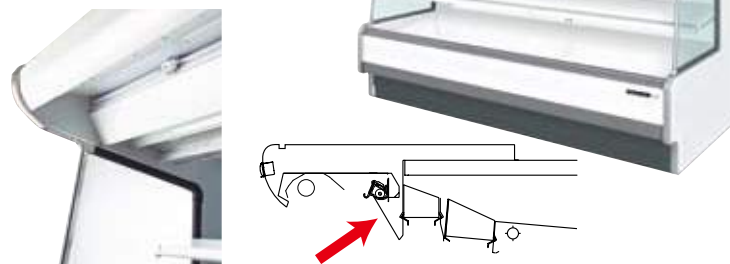
<b>Multi-deck type NS 6 series</b> With a change in airflow outlet position and the revision of honeycomb width	Approximately <b>15~20%</b> energy savings
<b>Semi multi-deck type LH 6 series</b> With a modification into double air curtain and a new design for refrigeration unit	Approximately <b>15~30%</b> energy savings
<b>Semi multi-deck type LY 7 series</b> With the new design of refrigeration unit	Approximately <b>22~25%</b> energy savings
<b>Island type IC 9 series</b> With a new design for duct structure and refrigeration unit	Approximately <b>15~30%</b> energy savings
<b>Island type BI 7 series</b> With the revision of air curtain and a new design for refrigeration unit and duct structure	Approximately <b>20~40%</b> energy savings
<b>Serve-over type FL 6 series</b> With the revision of air curtain and a new design for refrigeration unit	Approximately <b>40~50%</b> energy savings
<b>Freezer Reach in showcase SGC series</b> With the revision of duct structure and refrigeration unit	Approximately <b>22%*</b> energy savings

\*Compared to SRK and per unit length

### Multi-deck type NS 6 series

#### Allowing new POP display renditions

- By changing the shape of the airflow outlet, there is now a 100mm wide flat surface that can be used for POP displays and displaying temperature management panels. The light shines brightly on this panel improving display characteristics, leading to improved sales.



### Serve-over type FL 6 series



- The thickness of its exterior top was changed, and finished with a slim design.
- Achieving significant energy savings by reviewing the air curtain and a newly designed refrigeration unit and duct structure.

### Semi multi-deck type LY 7 series



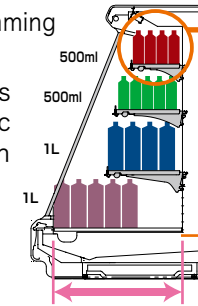
- Clean design by thinning of the top plate.
- Adding canopy-less design to obtain a dynamic product.

### Semi Multi-deck type LH 6 series

- Increased "golden space" by slimming down the refrigeration unit.
- By increasing the dimensions of the front opening, dynamic product display effects can be expected.

Increased depth for the bottom of the display

Thick-type(X)780mm → **805mm**



500ml PET bottles can now be placed on the shelf  
Top shelf of a 1700mm high, 350mm handrail case : 280ml PET → 500ml PET

**Increased front opening dimensions**  
**58mm increase in 1550 - 1700mm height products**  
(Standard 550mm handrail used)  
**42mm increase in 1250 - 1350mm height products**  
(Standard 550mm handrail used)



### Island type IC 9 series BI 7 series IE 1 series (Inverter internal freezer unit type) IMW/L series (Inverter internal freezer unit type)

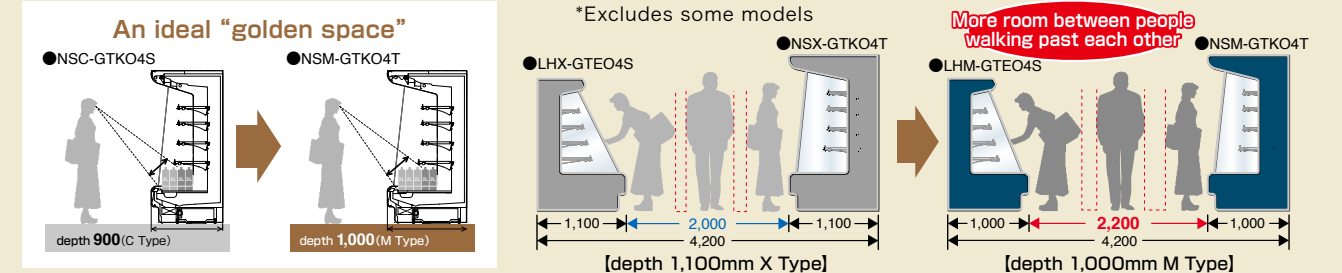


- Long cooling durability improved and continuous operation possible, in stores operating for 12 hours, it can be used without the defrosting during opening.
- Dissolution of the store's cold aisle with the IE1 series and its built-in inverter refrigerating equipment.

### Depth 1,000mm M Type

In response to the needs for more efficient store spaces, a 1,000mm depth type model has been newly added to the Send-you series lineup\*. Achieves a sense of volume and secures display space while realizing a more compact and efficient store.

\*Excludes some models





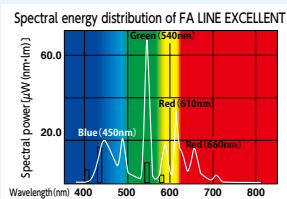
# Staging "Freshness and Deliciousness" Color Rendering Fluorescent Lamps <FA Line>

Besides being focused on expressing freshness,  
At Fukushima, we also develop our own lamps.

The natural freshness of fresh foods are presented in a bright and appealing manner.  
**FA LINE EXCELLENT FA-X**



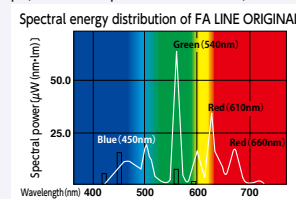
- At the high rate of average production evaluation, bright and colorful food is presented in a well balanced manner.
- It is a five-wave region luminescence type and the vivid color is similar to natural light.
- At high color temperature of 6,200K, whites are also vivid.



Colors are used to present fish, meat or fruits and vegetables in the best possible manner.  
**FA LINE ORIGINAL FA-O**



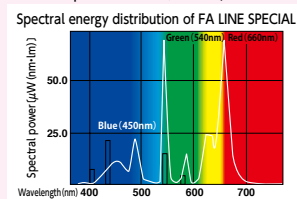
- The general-purpose type production lamp presents the blue and white colors of fish, the red color of meat and the green of vegetables in a fresh and appealing manner.
- The four-wave region luminescence type can be used for a wide variety of food. It is brighter than the general white and three-wave region luminescence type lamps, and the natural color harmonizes with lighting in a shop. (Color temperature 5,000K)



Promoting the appetite by enhancing the redness of meats and marbling.  
**FA LINE SPECIAL FA-S**



- The red meat and marbling of the beef are more vivid and moreover, the natural tones of pork or chicken are presented in fresh manner.
- The longer wavelength of the red light emphasizes the coloring of the meat. It is more vivid than general three-wave region luminescence type lamps and provides more natural tones in comparison with flesh color coloring type lamps. (Color temperature 5,000K)

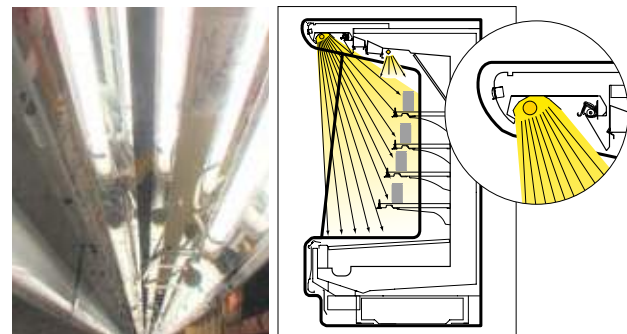


## Tecno Bright (optional)

Tecno Bright offers superior presentation and contributes to energy conservation. In addition to the traditional Tecno Bright which can be used for a wide variety of purposes from fresh meats and fish to chilled foods, a new FHF Canopy (optional) has been added to the lineup. The FHF Canopy can provide the same level of presentation as overhead specification products and drastically reduced the running costs of lighting.

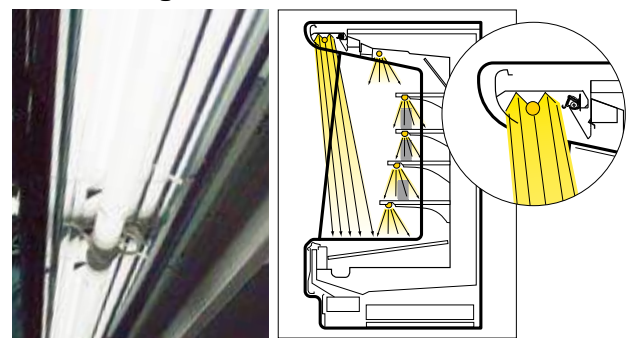


### FHF Canopy (Ideal for chilled products and beverage cases)



\*Secures vertical illuminance for products even without shelf lighting.

### Tecno Bright (Can be attached to all refrigerated multi-deck showcases.)



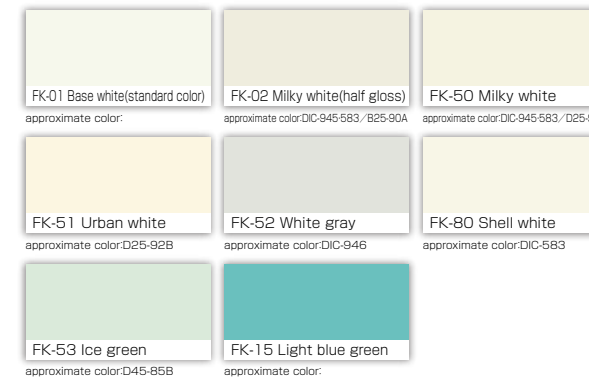
\*Increases the illuminance of the "Golden Space" in fresh food showcases.

# Increase the level of your store's image by selecting unique colors

Completely coordinated with the store's interior  
Be creative and use different colors for each corner.

## Body Color

### White and Ivory tones.



### Cream and pink tones.



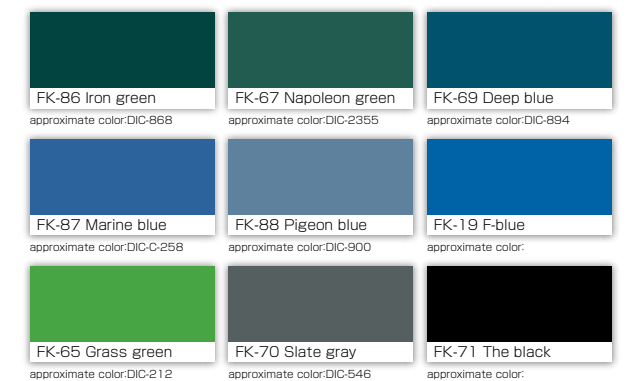
### Win and brown tones.



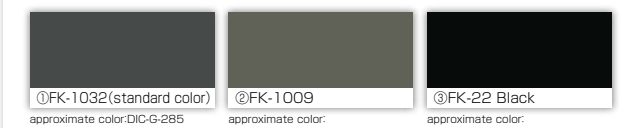
### Gray, beige and ivory tones.



### Elegant dark tones.



## Skirtpanel Color



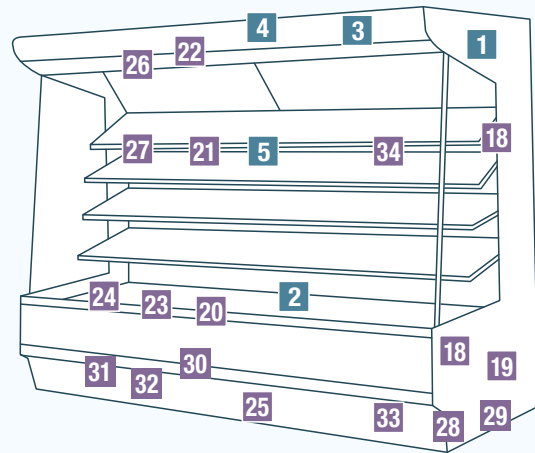
\*The above-mentioned colors are sample color. It is possible that the color are a little different from the color of real products.  
\*Approximate color are "DIC"(name of the printing sample) and "NITTOKO"(name of the painting sample),and shows very close color. ("DIC" means DIC, "P" means NITTOKO.)



# A wide selection of options that help increase performance and improve presentation

We have prepared a variety of proposals to present your products in a more appealing manner and to reduce the hassle involved in arranging products.

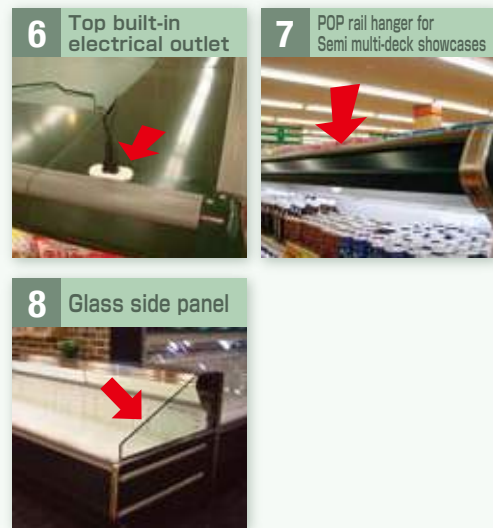
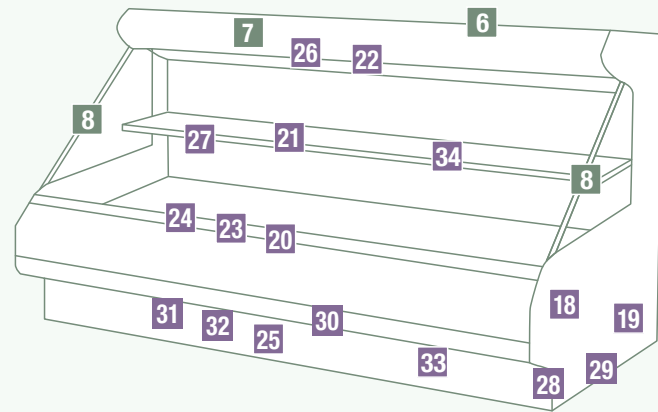
## Multi-deck type



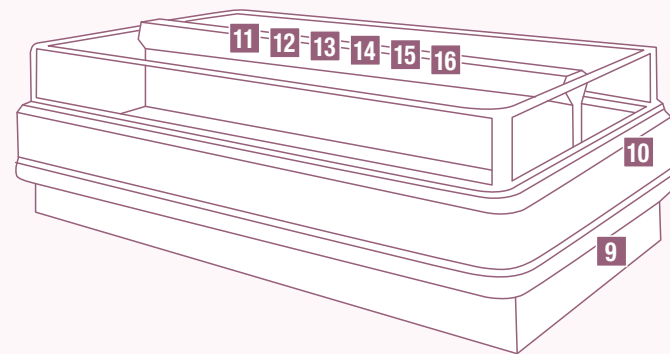
## For both Multi-deck and Semi Multi-deck showcases



## Semi Multi-deck type



## Island type





## ■ H1,800mm Multi-deck type NS/NK-Z series



NSM-ESZM25 With multiple mirrors

- New lineup with body height H 1,940 specifications as base
- New design of the exterior panel
- Refrigeration capacity about 10 percent down compared to H 1,940 specifications with a 140mm reduction of opening dimension
- Approximately 10% energy savings compared to H1,700 specifications.

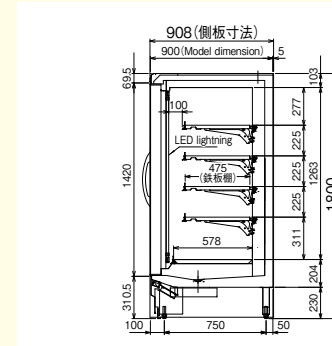
### Comparison of required refrigeration capacity

Depth: 1,000mm Handrail height: 450mm 3~5°C Spec 242cm type

1,940H	1,900w	100%
1,800H	1,710w	90%
1,700H	1,916w	112% (Compared to H 1,800)

## ■ H1,800mm SGC-Z series

- Newly designed H 1,800 in the SGC series



SGC-FZA4R

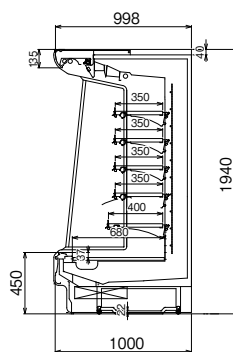


NSX-ESZM25

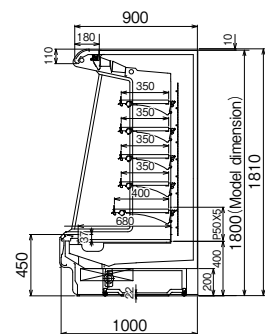


NSX-GTZM45

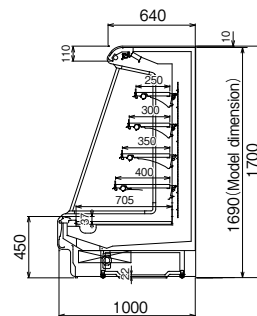
### NSM-86 (66) GTKO5S



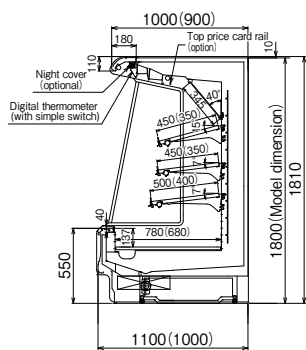
### NSM-86 (66) GTZO5S



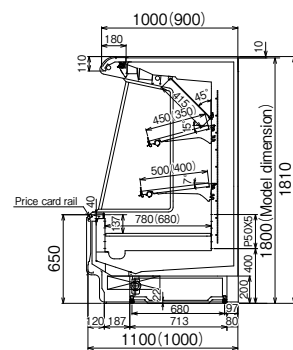
### LHM-86 (66) GTYO4S



### For fruits and vegetables

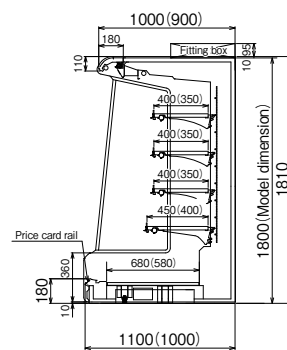


NSX-[C·D·9·8·6]6ESZO3S  
(NSM-[C·D·9·8·6]6ESZO3S)

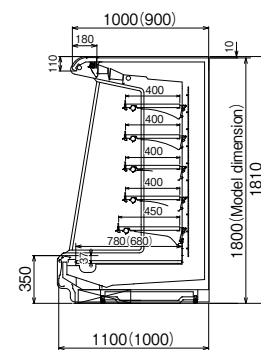


NSX-[C·D·9·8·6]6EOZO2S  
(NSM-[C·D·9·8·6]6EOZO2S)

### For daytime delivery and processed food

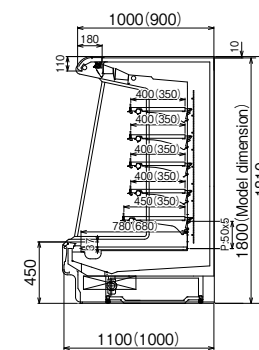


NSX-[C·D·9·8·6]6GLZO4S  
(NSM-[C·D·9·8·6]6GLZO4S)

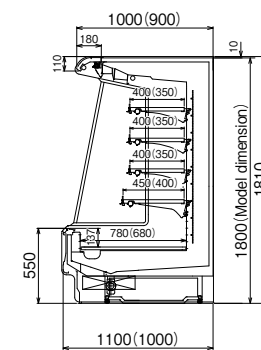


NSX-[C·D·9·8·6]6GUZO5S  
(NSM-[C·D·9·8·6]6GUZO5S)

### For daytime delivery and processed food

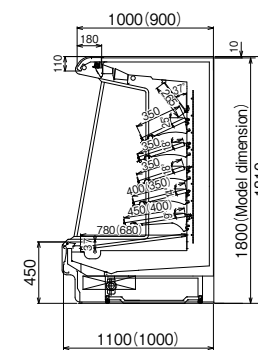


NSX-[C·D·9·8·6]6GTZO5S  
(NSM-[C·D·9·8·6]6GTZO5S)

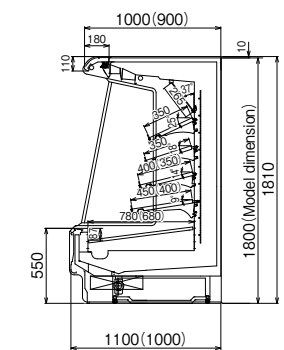


NSX-[C·D·9·8·6]6GSZO4S  
(NSM-[C·D·9·8·6]6GSZO4S)

### For fresh meat and fresh fish



NSX-[C·D·9·8·6]6RTZO5S  
(NSM-[C·D·9·8·6]6RTZO5S)  
NKX-[C·D·9·8·6]6VTZO5S  
(NKM-[C·D·9·8·6]6VTZO5S)



NSX-[C·D·9·8·6]6RSZO4S  
(NSM-[C·D·9·8·6]6RSZO4S)  
NKX-[C·D·9·8·6]6VSZO4S  
(NKM-[C·D·9·8·6]6VSZO4S)

\*The numbers in brackets [ ] are the dimensions of the opening. C and D are 363cm type: C has shelves of 121cm section, and D has shelves of 91cm section  
\*Depth is 1,000mm for the M type inside the ( )

Remote type showcase

Plug-In type showcase

Remote type showcase

Plug-In type showcase



■ Super Fresh Multi-deck Types Super Fresh Open Showcase



NKX-VSKM4S

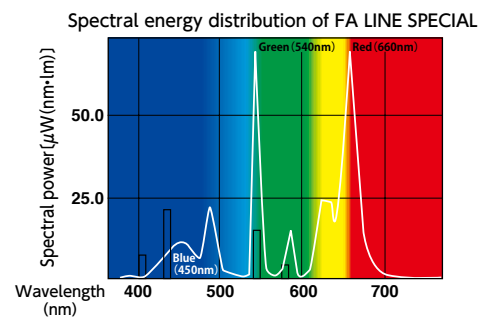
NKX-VSKM4T NKX-86VSKM4S

\*1 The numbers in brackets [ ] are the dimensions of the opening.  
C has a width of 3,658mm (12 shaku type)  
9 has a width of 2,743mm (9 shaku type)  
8 has a width of 2,438mm (8 shaku type)  
6 has a width of 1,829mm (6 shaku type)  
\*2 Numbers in parentheses ( ) are for type C (900mm depth).



Showcase lamps (Optional) FA LINE SPECIAL FA-S

Promoting the appetite by enhancing the redness of meats and whiteness of fatsmarbling.



• The red meat and marbling of the beef are more vivid and moreover, the natural tones of pork or chicken are presented in fresh manner.  
• The longer wavelength of the red light emphasizes the coloring of the meat. It is more vivid than general three-wave region luminescence type lamps and provides more natural tones in comparison with flesh color coloring type lamps. (Color temperature 5,000K) **Refer to P.8**

■ Super Fresh Serve-over Type Super Fresh Open Showcase Fresh Open Showcase



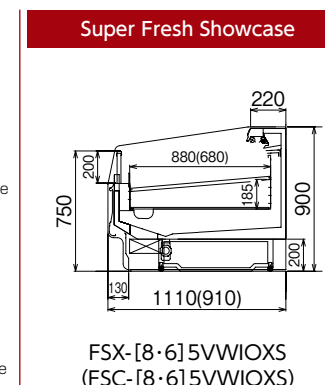
FLX-VOSO1S



FLX-VOSM1J



FSX-85VWIOXS



\*1 The numbers in brackets [ ] are the dimensions of the opening.  
C has a width of 3,658mm (12 shaku type)  
9 has a width of 2,743mm (9 shaku type)  
8 has a width of 2,438mm (8 shaku type)  
6 has a width of 1,829mm (6 shaku type)  
\*2 Numbers in parentheses ( ) are for type C (910mm depth).



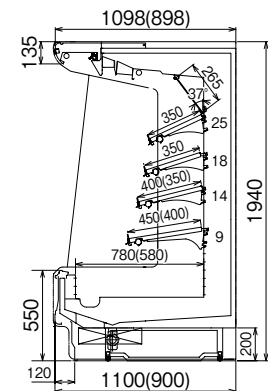
FLX-VSIOXS

■ Super Fresh Serve-over Type Fresh Open Showcase FL Series Specification Variations \*Also available with stainless steel interiors

Standard type	With mirrors	With shelves	With wide mirrors
Type M : Bottom shelf 780mm (depth 1,000mm)	Product height 1,100mm Depth of top panel 190mm Mirror 165mm	Product height 1,000mm 350mm shelves	Product height 1,150mm Depth of top panel 250mm Wide mirrors 305mm
FLX[C·9·8·6]6VOBOXC FLM[C·9·8·6]6VOBOXC (FLC[C·9·8·6]6VOBOXC) (Lighting is standard)	FLX-[8·6]6VOPMXH (FLC-[8·6]6VOPMXH)	FLX-[C·9·8·6]6VOPO1C (FLC-[C·9·8·6]6VOPO1C)	FLX-[8·6]6VSBMXJ (FLC-[8·6]6VSBMXJ)

Super Fresh Showcase

Also available with 650mm handrails  
Type M : Same shelving as Type C (depth 1,000mm) Bottom shelf 680mm



NKX-[C·D·9·8·6]6VSKM4S  
NKM-[C·D·9·8·6]6VSKM4S  
(NKC-[C·D·9·8·6]6VSKM4S)



FLX-VOSM1S



Multi-deck / Semi Multi-deck Open Showcases



LHX-RSUM2S



LHX-RSYM4S



LHX-RSUM2S



NSX-86RSKM4S



LHX-86RSE04S

\*1 The numbers in brackets [ ] are the dimensions of the opening.  
C and D have a width of 3,658mm (12 shaku type)  
9 has a width of 2,743mm (9 shaku type)  
8 has a width of 2,438mm (8 shaku type)  
6 has a width of 1,829mm (6 shaku type)

\*2 Numbers in parentheses ( ) are for type C (900mm depth).

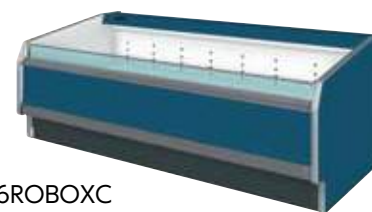
Serve-over Type Open Showcases



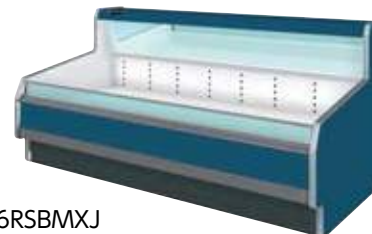
FLX-VOIOXS(Optional humidifier)



FLM-VOIOXS



FLX-86ROBOXC



FLX-86RSBMXJ

\*1 The numbers in brackets [ ] are the dimensions of the opening.  
C has a width of 3,658mm (12 shaku type)  
9 has a width of 2,743mm (9 shaku type)  
8 has a width of 2,438mm (8 shaku type)  
6 has a width of 1,829mm (6 shaku type)

\*2 Numbers in parentheses ( ) are for type C (910mm depth).

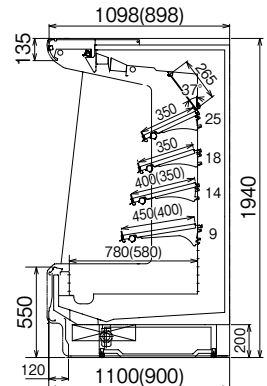


FLM-VSMIG

FL Series Specification Variations \*Also available with stainless steel interiors

Standard type	With mirrors	With shelves	With wide mirrors
Type M : Bottom shelf 780mm (depth 1,000mm)	Product height 1,100mm Depth of top panel 190mm Mirror 165mm	Product height 1,000mm 350mm shelves	Product height 1,150mm Depth of top panel 250mm Wide mirrors 305mm
FLX-[C·9·8·6]6ROBOXC FLM-[C·9·8·6]6ROBOXC (Lighting is standard)	FLX-[8·6]6ROPXHX (FLC-[8·6]6ROPXHX)	FLX-[8·6]6ROPO1C (FLC-[8·6]6ROPO1C)	FLX-[8·6]6RSBMXJ (FLC-[8·6]6RSBMXJ)

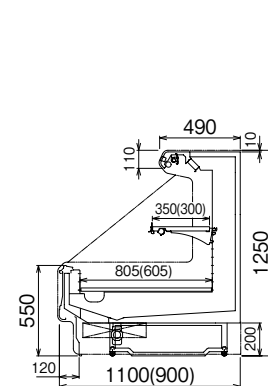
Type M : Same shelving as Type C (depth 1,000mm) Bottom shelf 680mm



NSX-[C·D·9·8·6]6RSKM4S  
NSM-[C·D·9·8·6]6RSKM4S  
NSC-[C·D·9·8·6]6RSKM4S

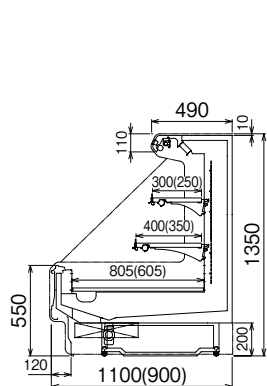
\*Also available with 450mm and 650mm handrails

Type M : Same shelving as Type C (depth 1,000mm) Bottom shelf 705mm



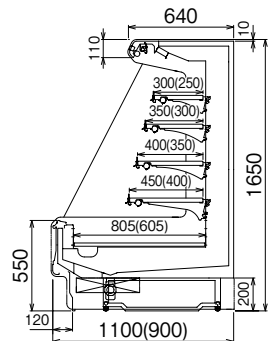
LHX-[C·D·9·8·6]6RSLO1S  
LHM-[C·D·9·8·6]6RSLO1S  
(LHC-[C·D·9·8·6]6RSLO1S)  
(1 shelf / Height: 1,250mm)

Type M : Same shelving as Type C (depth 1,000mm) Bottom shelf 705mm



LHX-[C·D·9·8·6]6RSUO2S  
LHM-[C·D·9·8·6]6RSUO2S  
(LHC-[C·D·9·8·6]6RSUO2S)  
(2 shelves / Height: 1,350mm)

Product height: 1,550mm.  
Can also be used with 3 shelves.  
Type M : Same shelving as Type C (depth 1,000mm) Bottom shelf 705mm



LHX-[C·D·9·8·6]6RSE04S  
LHM-[C·D·9·8·6]6RSE04S  
(LHC-[C·D·9·8·6]6RSE04S)  
(4 shelves / Height: 1,650mm)



### Island Type Open Showcases



(Rear) BIL-PEI (Front) ICL-PEI



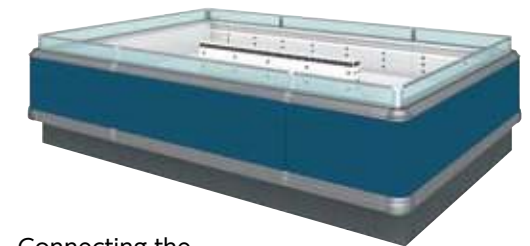
BIL-REI and BIE-RLI



BIL-REI

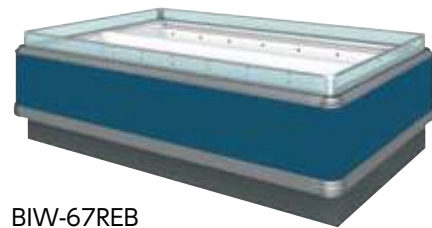


BIR-RWI and BIW-REI



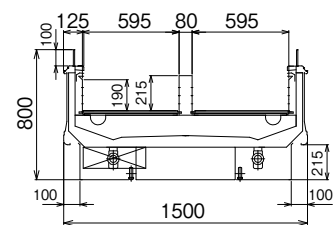
Connecting the  
BIW-67REB and BIR-57RWS (1 unit each)

\*1 The numbers in brackets [ ] are the dimensions of the opening.  
8 has a width of 2,438mm (8 shaku type)  
6 has a width of 1,829mm (6 shaku type)



BIW-67REB

\*1 The numbers in brackets [ ] are the dimensions of the opening.  
8 has a width of 2,438mm (8 shaku type)  
6 has a width of 1,829mm (6 shaku type)



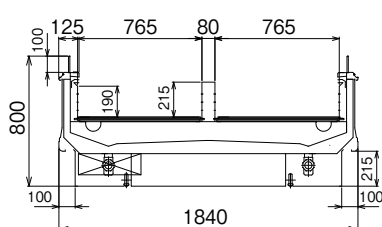
BIW- [8·6]7REB



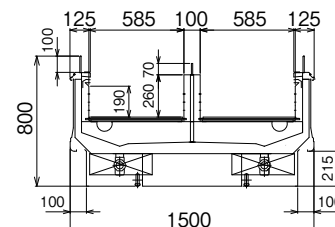
BIW-PEI and BIE-PWI

\*Also available with stainless steel interiors

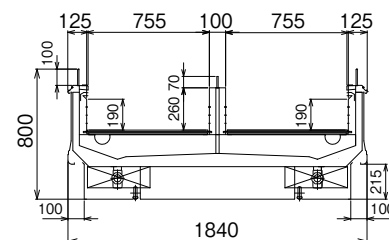
■ Switchable between -20~-12°C and -2~2°C



BIL- [8·6]7REB



BIW- [8·6]7PEB

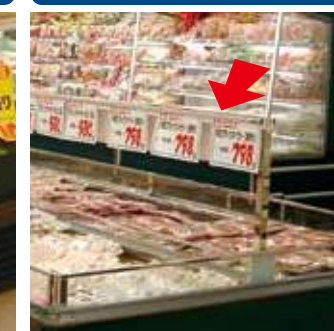


BIL-[8·6]7PEB

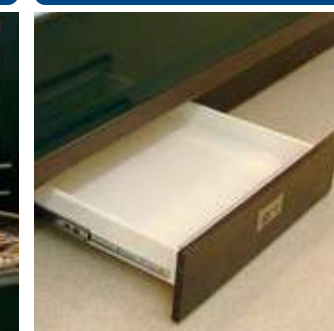
Options Folding shelf



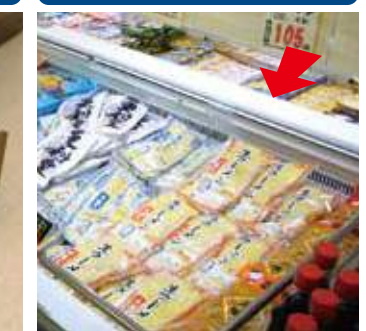
Options POP stand for island showcases



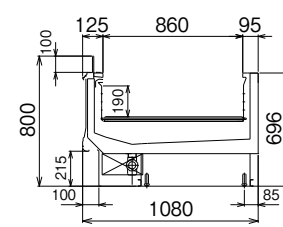
Options Storage drawer



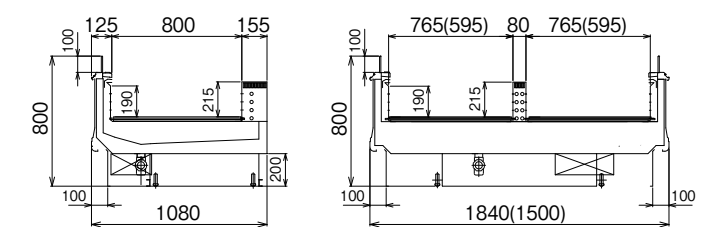
Options Roll-up night covers for freezer island showcases



\*There are limitations regarding where this can be attached



BIE-67RLS (For BIL ends)  
BIE-57RWS (For BIW ends)



BIR- 67RLS[57RWS] \*Also available with stainless steel interiors



### Multi-deck Open Showcases



NSX-DSKM4T(Triple glass side shelves optional)



NSX-86DSKM4S

- \*1 The numbers in brackets [ ] are the dimensions of the opening.  
8 has a width of 2,438mm (8 shaku type)  
6 has a width of 1,829mm (6 shaku type)  
4 has a width of 1,219mm (4 shaku type)
- \*2 Numbers in ( ) are for the C type  
(NSC has a depth of 900mm, SSC has a depth of 920mm).



SSC-FSKO4S

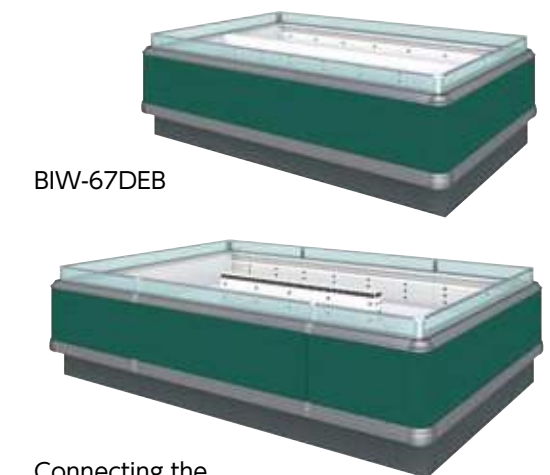
### Island Type Showcases



BIL-REI and BIE-RLI



BIL-PEI



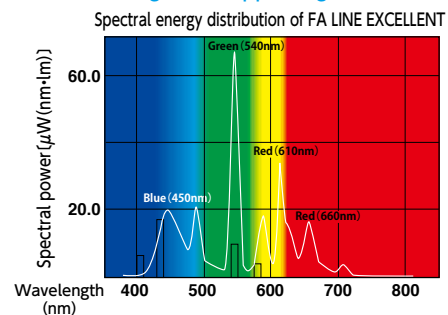
BIW-67DEB

Connecting the  
BIW-67REB and BIR-57RWS (1 unit each)

- \*1 The numbers in brackets [ ] are the dimensions of the opening.  
8 has a width of 2,438mm (8 shaku type)  
6 has a width of 1,829mm (6 shaku type)

#### Showcase lamps (Optional) FA LINE EXCELLENT FA-X

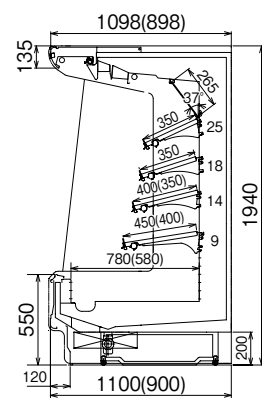
The natural freshness of fresh foods are presented  
in a bright and appealing manner.



- At the high rate of average production evaluation, bright and colorful food is presented in a well balanced manner.
- It is a five-wave region luminescence type and the vivid color is similar to natural light.
- At high color temperature of 6,200K, whites are also vivid.

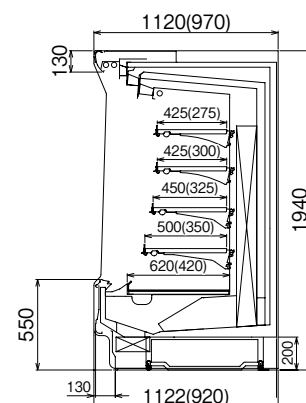
Refer to P.8

Also available with 650mm handrails



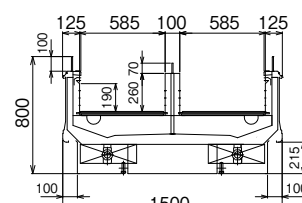
NSX-[8·6]6DSKM4S  
(NSC-[8·6]6DSKM4S)

■ -20~-18°C  
Also available with 650mm handrails



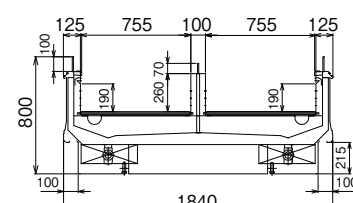
SSX-[8·6·4]6FSKO4W  
(SSC-[8·6·4]6FSKO4W)

■ Switchable between -20~-12°C and -2~2°C

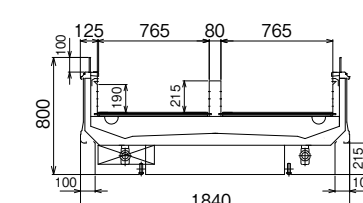


BIW-[8·6]7PEB

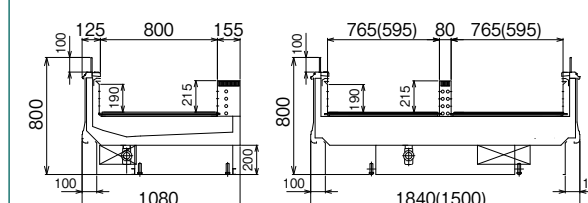
■ Switchable between -20~-12°C and -2~2°C



BIL-[8·6]7PEB

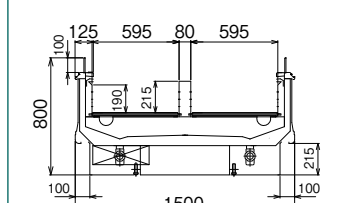


BIL-[8·6]7DEB



BIR-67DLS[57DWS]

\*Also available with stainless steel interiors



BIW-[8·6]7DEB



Remote type showcase



NSX-RSKM4S



NSX-VSKM4S-LHX-RSUM2S

Remote type showcase

Plug-In type showcase



LHX-RSYM3S



NKX-VSKM4S-FLX-VOPMXH

Plug-In type showcase



Remote type showcase

Plug-In type showcase

Remote type showcase

Plug-In type showcase



FLX-VSPM15



FLX-VOPM15



FLX-VOPM15



FLM-RSPM15



Remote type showcase



FLX-RSPO15



Front: BIL-PEI Against wall: FLX-RSIOXS

Remote type showcase

Plug-In type showcase



特殊クローズショーケースとNKX-VSKM45

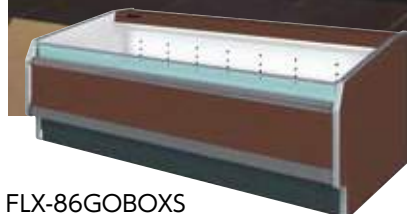


FLX-GSIOXS

Plug-In type showcase



■ Serve-over / Semi Multi-deck Open Showcases



FLX-GSPO1S

FLX-86GOBOXS

\*1 The numbers in brackets [ ] are the dimensions of the opening.  
 C has a width of 3,658mm (12 shaku type)  
 9 has a width of 2,743mm (9 shaku type)  
 8 has a width of 2,438mm (8 shaku type)  
 6 has a width of 1,829mm (6 shaku type)

\*2 Numbers in parentheses ( ) are for type C (910mm depth).



With drawer (custom specifications)

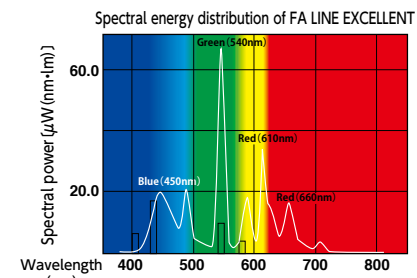
\*There are limitations regarding where this can be attached



FLX-AOPOXS

Showcase lamps (Optional) **FA LINE EXCELLENT FA-X**

The natural freshness of fresh foods are presented in a bright and appealing manner.



• At the high rate of average production evaluation, bright and colorful food is presented in a well balanced manner.  
 • It is a five-wave region luminescence type and the vivid color is similar to natural light.  
 • At high color temperature of 6,200K, whites are also vivid. [Refer to P.8](#)



LYM-GSLM2S



LYX-87GTUO2S

\*1 The numbers in brackets [ ] are the dimensions of the opening.  
 8 has a width of 2,438mm (8 shaku type)  
 6 has a width of 1,829mm (6 shaku type)



ICL-GEB(custom specifications)



LYX-GSHM3S(custom specifications)

Standard type	For more volume	With mirrors	With shelves
Type M : Bottom shelf 780mm (depth 1,000mm)	Product height 1,000mm	Product height 1,100mm Depth of top panel 190mm Mirror 165mm	Product height 1,000mm 350mm shelves
FLX-[C-9-8-6]6GOBOXC FLM-[C-9-8-6]6GOBOXC (FLC-[C-9-8-6]6GOBOXC) (Lighting is standard)	FLX-[C-9-8-6]6GOPOXC (FLC-[C-9-8-6]6GOPOXC)	FLX-[8-6]6GOMPXH (FLC-[8-6]6GOMPXH)	FLX-[C-9-8-6]6GOPO1C (FLC-[C-9-8-6]6GOPO1C)

Thin canopy type	Thin canopy type	Custom made case for daily dish, sushi and boxed meals	Options
			POP rail hangers for handrails with standing glass
LYX-[8-6]7GTLO1S	LYX-[8-6]7GTUO2S (Unit height: 1350mm) LYX-[8-6]7GTHO3S (Unit height: 1550mm) LYX-[8-6]7GTEO4S (Unit height: 1650mm)	ICL-GEB custom specifications Switchable between chilled and non-chilled With sneeze guard	

Remote type showcase

Plug-In type showcase

Remote type showcase

Plug-In type showcase



Remote type showcase

Plug-In type showcase

Remote type showcase

Plug-In type showcase



MFX-GOPT1S



Left: NSM-GTSM45 (H1,800) Front: ICL-GEB(custom specifications)



FLX-GSP01S



FLX-GOP01S



FLX Buffet Show Case(custom specifications)



Multi-deck Open Showcases



NSX-EOKM2S(With wire type)



NSX-EKM3T



NSX-86EKM3S

\*1 The numbers in brackets [ ] are the dimensions of the opening.  
 C and D have a width of 3,658mm (12 shaku type)  
 9 has a width of 2,743mm (9 shaku type)  
 8 has a width of 2,438mm (8 shaku type)  
 6 has a width of 1,829mm (6 shaku type)  
 \*2 Numbers in parentheses ( ) are for type C (1,000mm depth).



NSX-EKM3T(custom specifications)



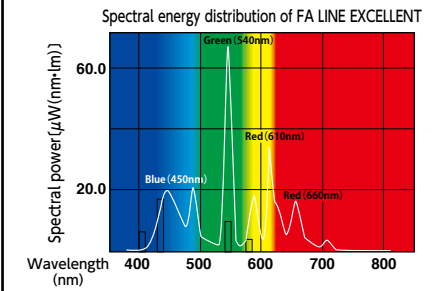
NSX-EKM4W



NSC-EKM3S(Custom made exterior)

Showcase lamps (Optional) **FA LINE EXCELLENT FA-X**

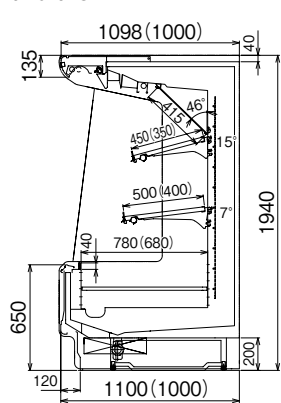
The natural freshness of fresh foods are presented in a bright and appealing manner.



- At the high rate of average production evaluation, bright and colorful food is presented in a well balanced manner.
- It is a five-wave region luminescence type and the vivid color is similar to natural light.
- At high color temperature of 6,200K, whites are also vivid.

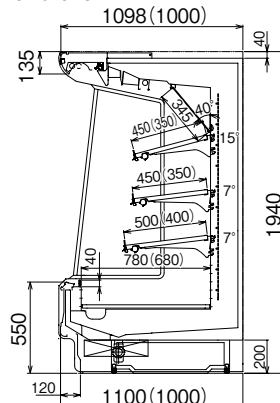
Refer to P.8

Also available with 550mm handrails



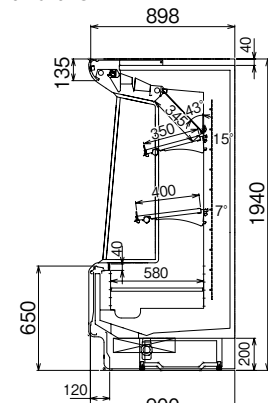
NSX-[C·D·9·8·6]6EOKM2S  
(NSM-[C·D·9·8·6]6EOKM2S)

Also available with 450mm handrails



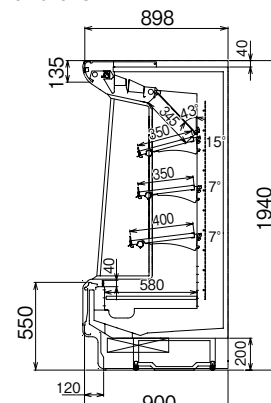
NSX-[C·D·9·8·6]6EKM3S  
(NSM-[C·D·9·8·6]6EKM3S)

Also available with 550mm handrails



NSC-[C·D·9·8·6]6EOKM2S

Also available with 450mm handrails



NSC-[C·D·9·8·6]6EKM3S

Options Water spray



Quick connect water spray



Drum type water spray

Options Ultrasonic humidifier



Remote type showcase

Plug-In type showcase



Multi-deck / Semi Multi-deck Open Showcases



NSX-ESKMXT(With multiple mirrors)



NSX-ETKMXT(With flower pots and multiple mirrors)  
With custom made canopy



LHX-GSUM2S



LHX-GSUM2S



NVX-86EEKMXS



NVX-EEKMXS

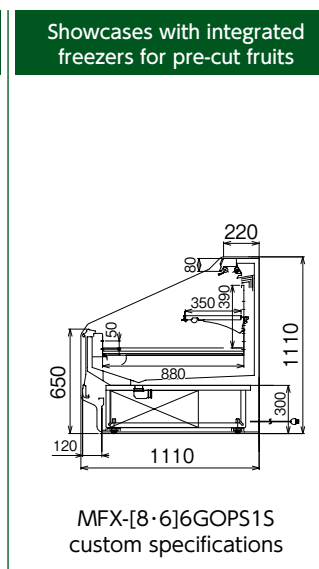
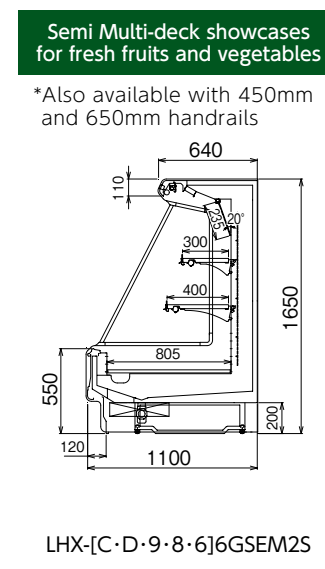
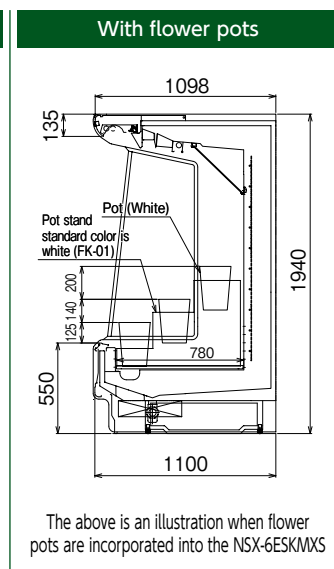
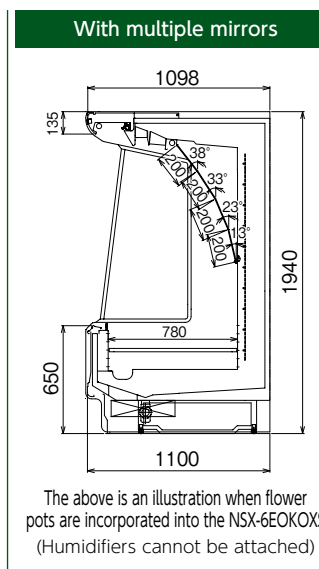
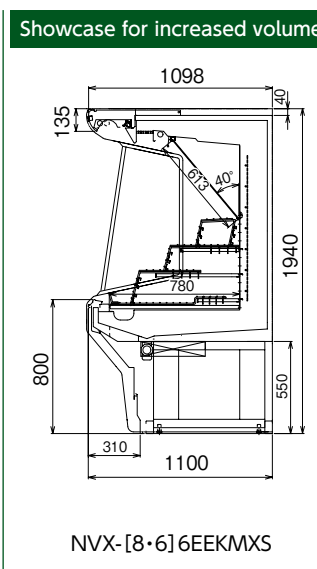
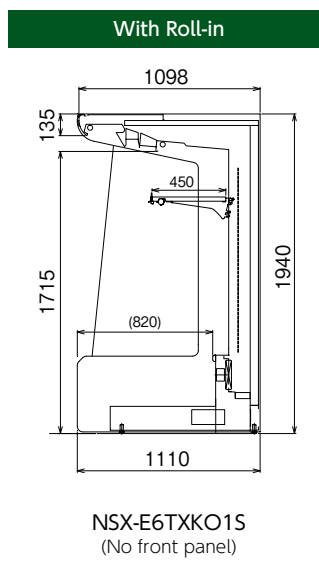


LHC-GSUM2S



LHX-GTEM3S

\*1 The numbers in brackets [ ] are the dimensions of the opening.  
C and D have a width of 3,658mm (12 shaku type)  
9 has a width of 2,743mm (9 shaku type)  
8 has a width of 2,438mm (8 shaku type)  
6 has a width of 1,829mm (6 shaku type)  
E has a width of 2,050mm



MFX-GOPS1S



Remote type showcase



LHX-ETYM35



NSX-EOKM25

Plug-In type showcase



NSX-ETKM25

Remote type showcase



MFX(custom specifications)

Plug-In type showcase



Multi-deck Open Showcases



CVK (HOT&COLD) +NSX-GUKO4S



NSX-GSKM4S



NSM-GTZO4S (H1,800)



NSX-GSKM2S (custom specifications)



NSX-86GSKO4S

\*1 The numbers in brackets [ ] are the dimensions of the opening.  
C and D have a width of 3,658mm (12 shaku type)  
9 has a width of 2,743mm (9 shaku type)  
8 has a width of 2,438mm (8 shaku type)  
6 has a width of 1,829mm (6 shaku type)  
E has a width of 2,050mm

\*2 Numbers in parentheses ( ) are for type C (900mm depth).



Exterior bottom slide-out shelf (custom specifications)

NSX-GLKO4S

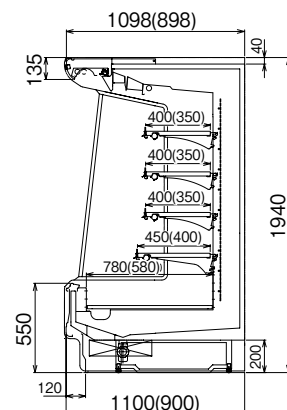


NSC-GUKO5S



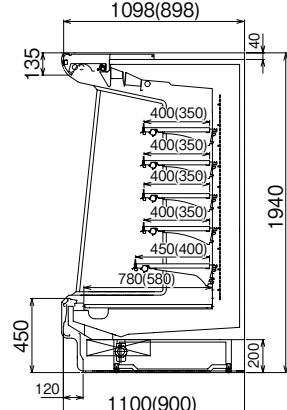
NSC-E4TKM1S (custom specifications)

Type M : Same shelving as Type C (depth 1,000mm) Bottom shelf 680mm



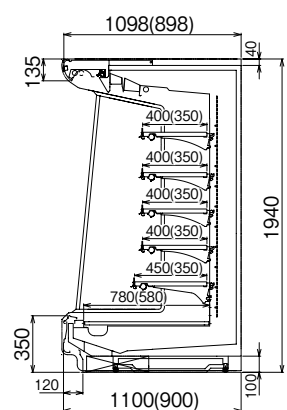
NSX-[C·D·9·8·6]6GSKO4S  
NSM-[C·D·9·8·6]6GSKO4S  
(NSC-[C·D·9·8·6]6GSKO4S)

Type M : Same shelving as Type C (depth 1,000mm) Bottom shelf 680mm



NSX-[C·D·9·8·6]6GTKO5S  
NSM-[C·D·9·8·6]6GTKO5S  
(NSC-[C·D·9·8·6]6GTKO5S)

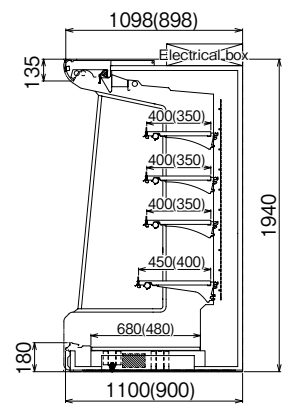
Type M : Same shelving as Type C (depth 1,000mm) Bottom shelf 680mm



NSX-[C·D·9·8·6]6GUKO5S  
NSM-[C·D·9·8·6]6GUKO5S  
(NSC-[C·D·9·8·6]6GUKO5S)

Super low deck specifications

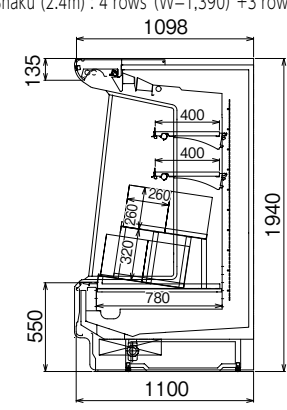
■ 5~8°C



NSX-[8·6]6GLKO4S  
(NSC-[8·6]6GLKO4S)

For milk racks

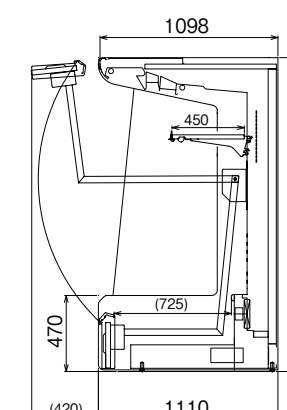
■ 6 Shaku (1.8m) : 4 rows (W=1,390)  
8 Shaku (2.4m) : 4 rows (W=1,390) +3 rows (W=1,043)



The above is an illustration when milk racks are incorporated into the NSX-6GSKO2S

Front-Up Specifications

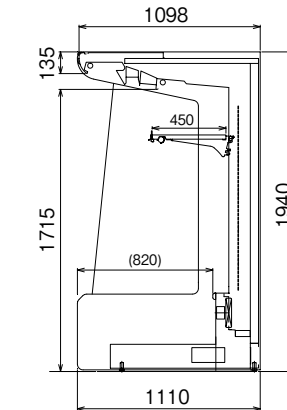
■ 5~10°C For 3 rows W=2,050



NSX-E6TWO1S

With Roll-in

■ 5~10°C For 3 rows W=2,050 For 4 rows W=2,745



NSX-E4TXKO1S



■ Semi Multi-deck Open Showcases

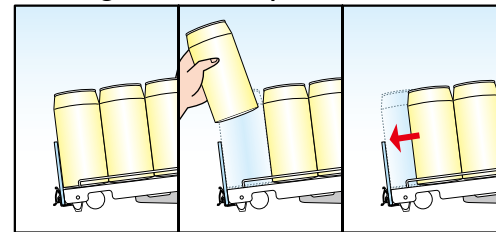


LHX-GUEO3S



LHX-85GSEO4S

■ Sliding front shelf (Options)



The surface is coated with a special paint that allows beverages (cans, PET bottles, glass bottles) to automatically slide forward



LHX-GTYM3H (With FHF Canopy)



LHX-GSUM2S

\*1 The numbers in brackets [ ] are the dimensions of the opening.  
C and D have a width of 3,658mm (12 shaku type)  
9 has a width of 2,743mm (9 shaku type)  
8 has a width of 2,438mm (8 shaku type)  
6 has a width of 1,829mm (6 shaku type)

\*2 Numbers in parentheses ( ) are for type C (900mm depth).



LHX-GSHM3S (custom specifications)

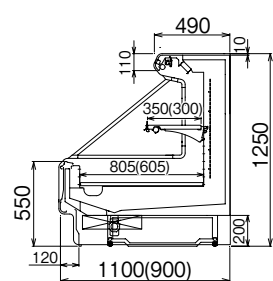


LHX-ETXYO1S (custom specifications/Side panel guards are optional)



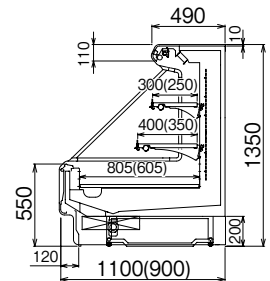
LHX-GSUM2S

Also compatible with 450mm high handrails  
Type M : Same shelving as Type C  
(depth 1,000mm) Bottom shelf 705mm



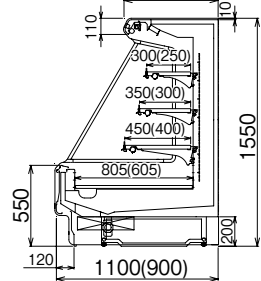
LHX-[C·D·9·8·6]6GSLO1S  
LHM-[C·D·9·8·6]6GSLO1S  
(LHC-[C·D·9·8·6]6GSLO1S)

Also compatible with 450mm high handrails  
Type M : Same shelving as Type C  
(depth 1,000mm) Bottom shelf 705mm



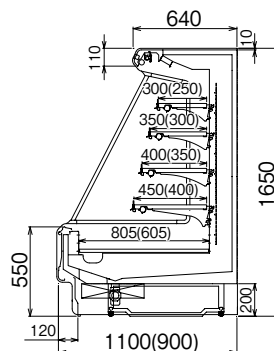
LHX-[C·D·9·8·6]6GSUO2S  
LHM-[C·D·9·8·6]6GSUO2S  
(LHC-[C·D·9·8·6]6GSUO2S)

Also compatible with 450mm high handrails  
Type M : Same shelving as Type C  
(depth 1,000mm) Bottom shelf 705mm



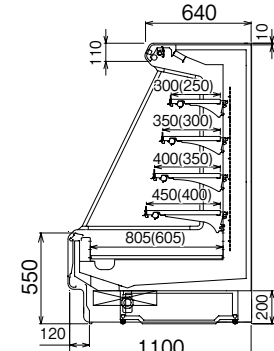
LHX-[C·D·9·8·6]6GSHO3S  
LHM-[C·D·9·8·6]6GSHO3S  
(LHC-[C·D·9·8·6]6GSHO3S)

Also compatible with 450mm high handrails  
Type M : Same shelving as Type C  
(depth 1,000mm) Bottom shelf 705mm



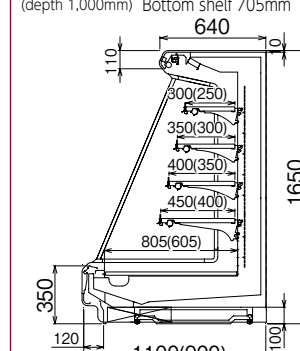
LHX-[C·D·9·8·6]6GSEO4S  
LHM-[C·D·9·8·6]6GSEO4S  
(LHC-[C·D·9·8·6]6GSEO4S)

Also compatible with 450mm high handrails  
Type M : Same shelving as Type C  
(depth 1,000mm) Bottom shelf 705mm



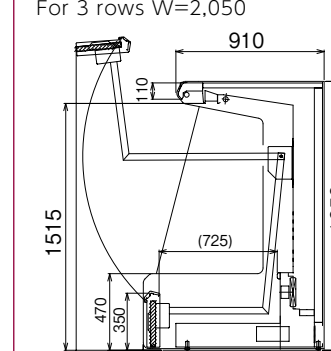
LHX-[C·D·9·8·6]6GSYO4S  
LHM-[C·D·9·8·6]6GSYO4S  
(LHC-[C·D·9·8·6]6GSYO4S)

350mm high handrails  
Also available in 1,700mm high unit.  
Type M : Same shelving as Type C  
(depth 1,000mm) Bottom shelf 705mm



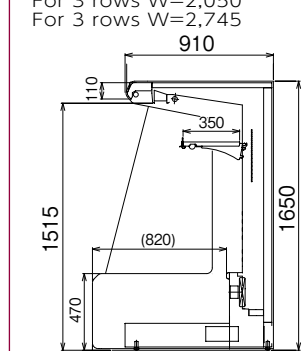
LHX-[C·D·9·8·6]6GUEO4S  
LHM-[C·D·9·8·6]6GUEO4S  
(LHC-[C·D·9·8·6]6GUEO4S)

Front-Up Specifications  
5~10°C  
Also available in 1,700mm high unit.  
For 3 rows W=2,050



LHX-E4TWEOXS

With Roll-in  
5~10°C  
Also available in 1,700mm high unit.  
For 3 rows W=2,050  
For 3 rows W=2,745



LHX-E4TXEO1S



Island Type / Semi Multi-deck Open Showcases



BIW-GEB (custom specifications)



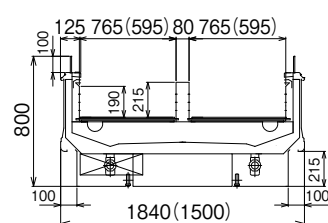
LYX-87GTUO2S

\*1 The numbers in brackets [ ] are the dimensions of the opening.  
8 has a width of 2,438mm (8 shaku type)  
6 has a width of 1,829mm (6 shaku type)



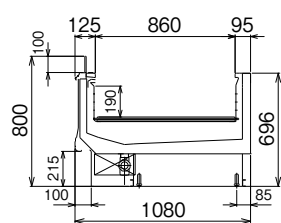
BIE-REB (Lighting requires separate arrangements)

\*Also available with stainless steel interiors



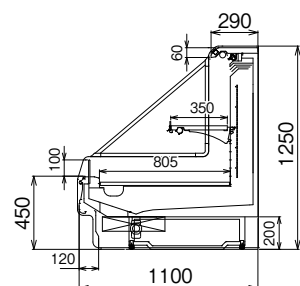
BIL-[8-6]7GEB  
(BIW-[8-6]7GEB)

\*Also available with stainless steel interiors



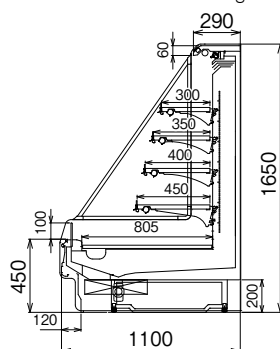
BIE-67RLS  
(BIE-57RWS)

Also available in 1,350mm high unit.



LYX-[8-6]7GTLO1S

Also available in 1,550mm high unit.



LYX-[8-6]7GTEO4S

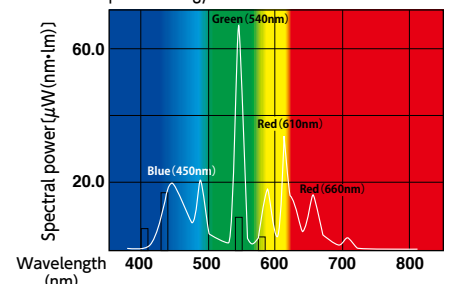


LYX-GTEO4S

Showcase lamps (Optional)  
FA LINE EXCELLENT FA-X

The natural freshness of fresh foods are presented in a bright and appealing manner.

Spectral energy distribution of FA LINE EXCELLENT



- At the high rate of average production evaluation, bright and colorful food is presented in a well balanced manner.
- It is a five-wave region luminescence type and the vivid color is similar to natural light.
- At high color temperature of 6,200K, whites are also vivid.

Refer to P.8

LHX-86GTEO4S



LHM-GUUM3S

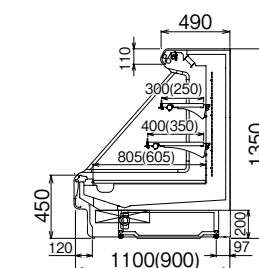


LHX-GTYO3S

\*1 The numbers in brackets [ ] are the dimensions of the opening.  
C and D have a width of 3,658mm (12 shaku type)  
9 has a width of 2,743mm (9 shaku type)  
8 has a width of 2,438mm (8 shaku type)  
6 has a width of 1,829mm (6 shaku type)

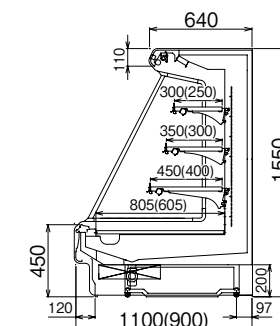
\*2 Numbers in parentheses ( ) are for type C (900mm depth).

Also available in 1,250mm high unit.  
Type M : Same shelving as Type C (depth 1,000mm) Bottom shelf 705mm



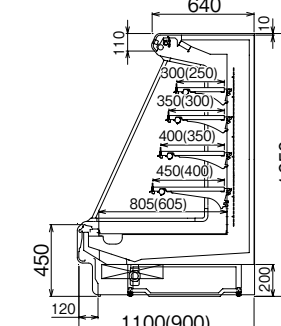
LHX-[C-D-9-8-6]6GTUO2S  
LHM-[C-D-9-8-6]6GTUO2S  
(LHC-[C-D-9-8-6]6GTUO2S)

Type M : Same shelving as Type C (depth 1,000mm) Bottom shelf 705mm



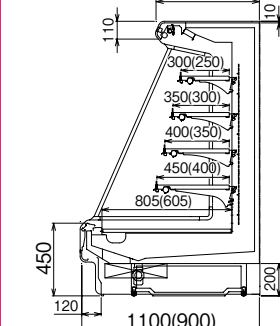
LHX-[C-D-9-8-6]6GTHO3S  
LHM-[C-D-9-8-6]6GTHO3S  
(LHC-[C-D-9-8-6]6GTHO3S)

Type M : Same shelving as Type C (depth 1,000mm) Bottom shelf 705mm



LHX-[C-D-9-8-6]6GTEO4S  
LHM-[C-D-9-8-6]6GTEO4S  
(LHC-[C-D-9-8-6]6GTEO4S)

Type M : Same shelving as Type C Bottom shelf 705mm (depth 1,000mm)



LHX-[C-D-9-8-6]6GTYO4S  
LHM-[C-D-9-8-6]6GTYO4S  
(LHC-[C-D-9-8-6]6GTYO4S)





NSX-GTKO3S(custom specifications)



NSX-GTKO3S



NSC-GUKO3S(custom specifications)



NSX-GLKO5S

Remote type showcase

Remote type showcase

Plug-In type showcase

Plug-In type showcase





LHM-GTHO3S(custom specifications)



LHC-GTHM3S(custom specifications)



LHX-GTUM2S



LHX-GSHM3S

Remote type showcase

Remote type showcase

Plug-In type showcase

Plug-In type showcase



Multi-deck Open Showcases  
Dual Showcase



SSX-FSKO4W



SSC-FSEO3S



STX-FOKO3S



SSX-86FSKO4W



SSX-86FSEO3S



SSX-FSKO4W



STX-86FOKO3S



STC-FOKO3S



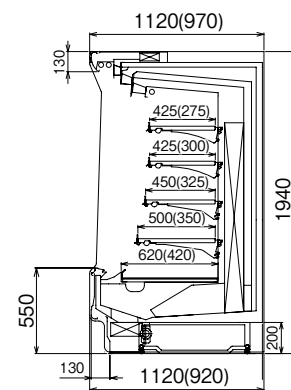
STX-FOEO2S (With LED lighting)

\*1 The numbers in brackets [ ] are the dimensions of the opening.  
8 has a width of 2,438mm (8 shaku type)  
6 has a width of 1,829mm (6 shaku type)  
4 has a width of 1,219mm (4 shaku type)

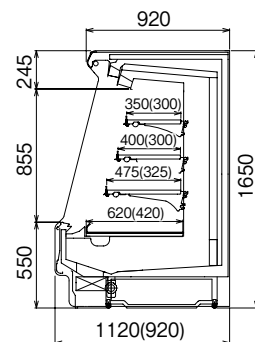
\*2 Numbers in parentheses ( ) are for type C (920mm depth).

\*1 The numbers in brackets [ ] are the dimensions of the opening.  
8 has a width of 2,438mm (8 shaku type)  
6 has a width of 1,829mm (6 shaku type)

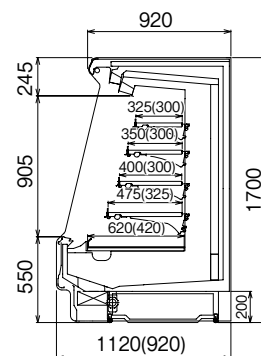
\*2 Numbers in parentheses ( ) are for type C (980mm depth).



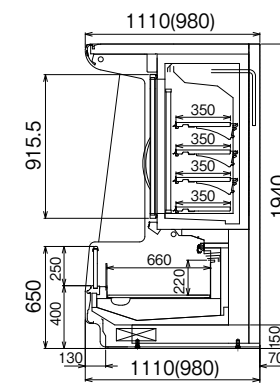
\*Also available with 650mm handrails  
SSX-[8·6·4]6FSKO4W  
(SSC-[8·6·4]6FSKO4W)



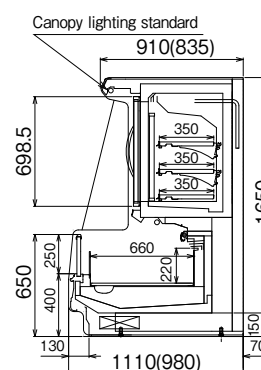
\*Also available in 1,550mm high unit.  
SSX-[8·6]6FSEO3S  
(SSC-[8·6]6FSEO3S)



SSX-[8·6]6FSYO4S  
(SSC-[8·6]6FSYO4S)



STX-[8·6]6FOKO3S  
(STC-[8·6]6FOKO3S)



STX-[8·6]6FOEO2S  
(STC-[8·6]6FOEO2S)

Options Roll-up night cover for dual freezer showcases





Island Type Open Showcases  
Glass Door Display Case



ICE-FWS, ICW-PEB

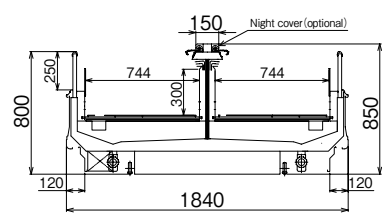


ICE-FWS, ICW-FEB  
(Non-chilled shelf is optional)

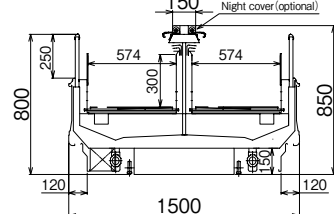
ICE-FWS, ICW-FEB (Non-chilled shelf is optional)

\*1 The numbers in brackets [ ] are the dimensions of the opening.  
8 has a width of 2,438mm (8 shaku type)  
6 has a width of 1,829mm (6 shaku type)

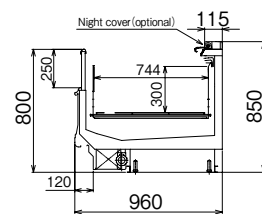
ICW-89FEB



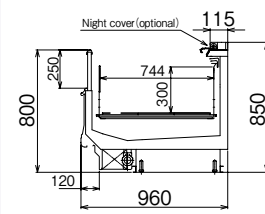
Depth 1,840mm Type  
ICL-[8·6]9FEB  
(ICL-[8·6]9PEB)



Depth 1,500mm Type  
ICW-[8·6]9FEB  
(ICW-[8·6]9PEB)

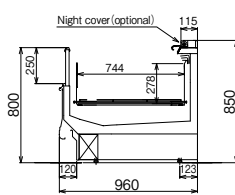
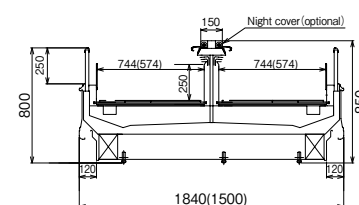


ICE-59FWS (For ICW ends)  
ICE-59PWS (For ICW ends)  
ICE-79FES  
ICE-79PES



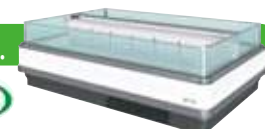
ICE-[8·6]9FEB  
ICE-[8·6]9PEB  
ICE-69FLS (For ICL ends)  
ICE-69PLS (For ICL ends)

Plug-in type  
Inverter Island Showcase  
**IE series**  
Three-phase 200V power



Achieves drastic energy reduction through inverter control.

Also contributes to cold aisle measures on the sales floor as well as reducing freezer unit volume and construction costs.



**IEW-61FEBTAX**  
● Exterior dimensions:  
W1,829+(70×2)× D1,500 × H850mm

**IEW-81FEBTAX**  
● Exterior dimensions:  
W2,438+(70×2)× D1,500 × H850mm

**IEL-61FEBTAX**  
● Exterior dimensions:  
W1,829+(70×2)× D1,840 × H850mm

**IEE-51FWSTAX**  
● Exterior dimensions:  
W1,360+(70×2)× D960 × H850mm

**IEE-61FLSTAX**  
● Exterior dimensions:  
W1,700+(70×2)× D960 × H850mm



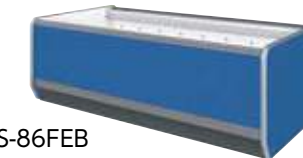
SRK-6FE(custom specifications)



BXS-FEB(Roll-up night cover is optional)



SGC-81FKA5R



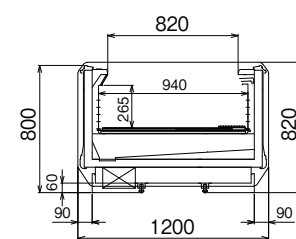
BXS-86FEB



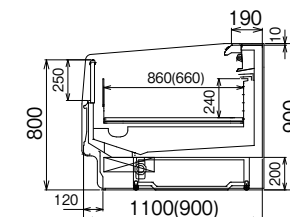
FLX-86FEBOXS



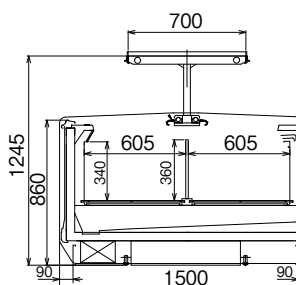
FLX-FEKO2S



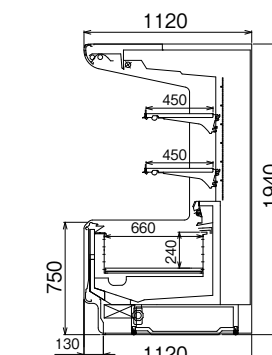
Depth 1,200mm Type  
BXS-[8·6]6FEB



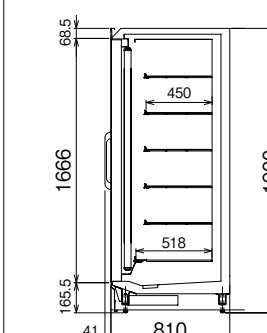
FLX-[8·6]6FEBOXC  
(FLC-[8·6]6FEBOXC)  
(Lighting is standard)



Depth 1,500mm Type  
BXW-[8·6]6FEB  
(Non-chilled shelf and night cover are optional)

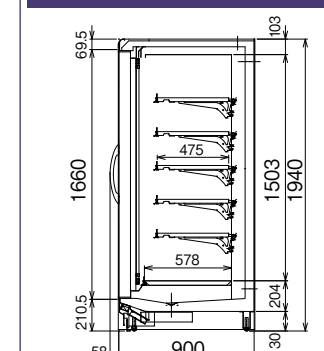


FLX-[8·6]5FAKO2S  
(Includes non-chilled shelf)



SRK-[7·6·5·4]6FE

Custom made for supermarkets  
Frozen foods / ice cream (-20±2°C)



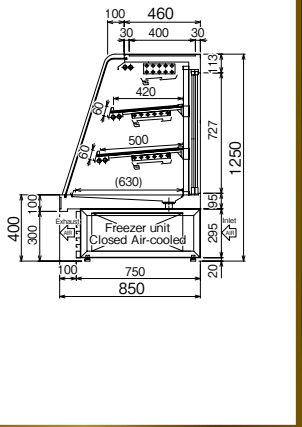
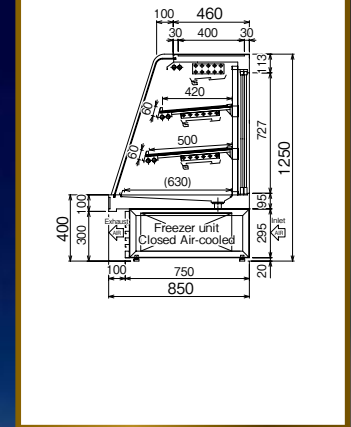
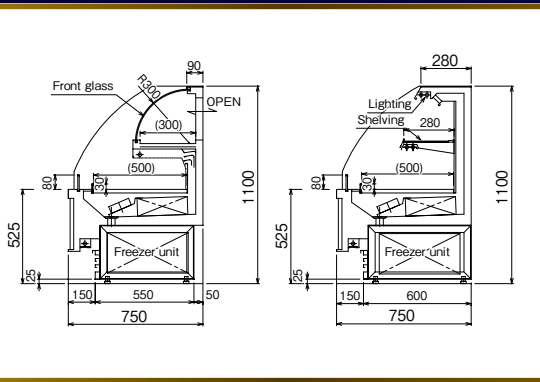
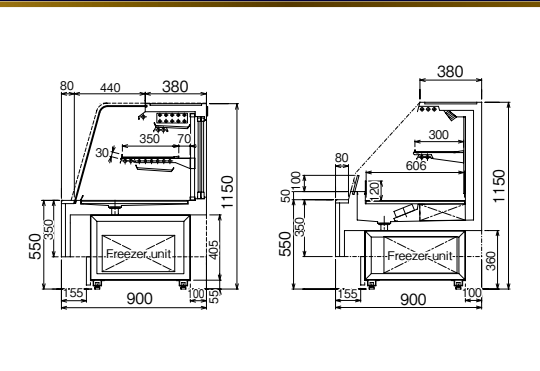
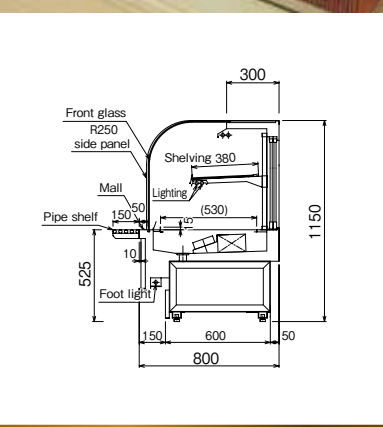
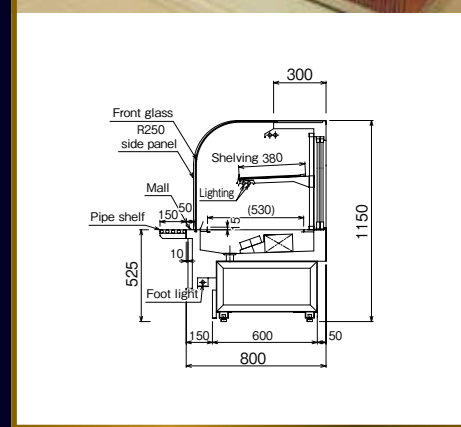
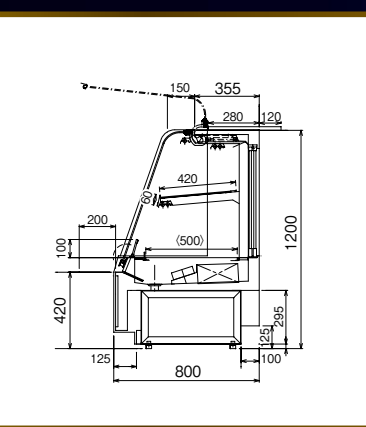
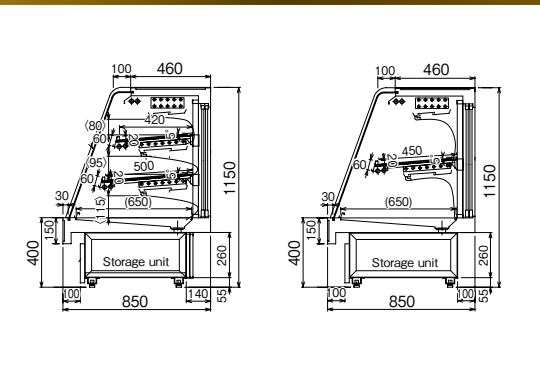
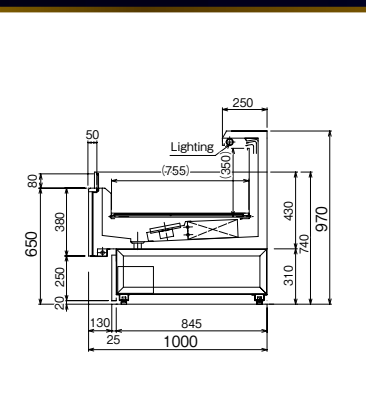
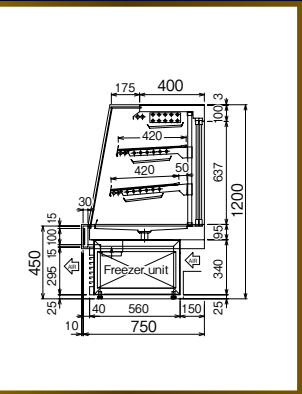
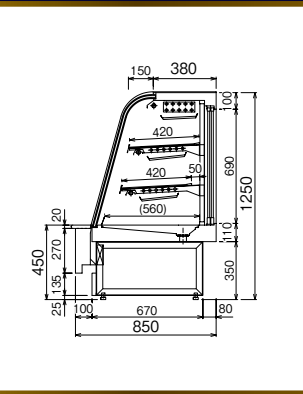
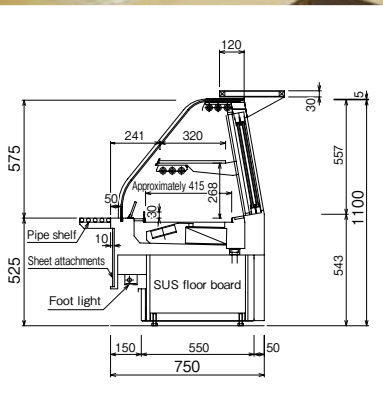
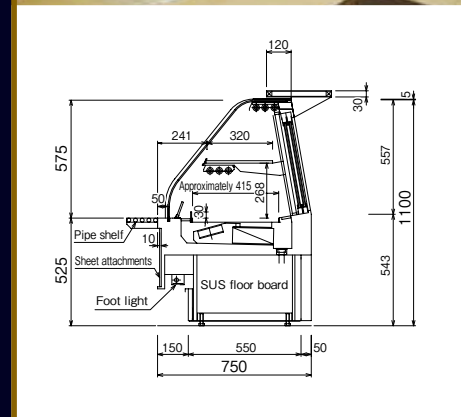
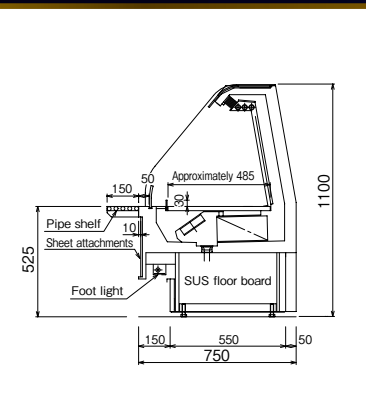
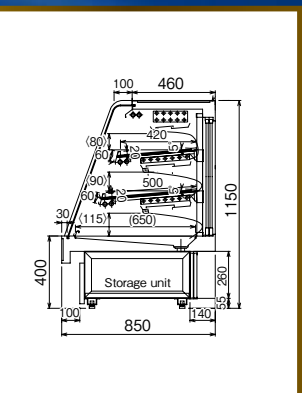
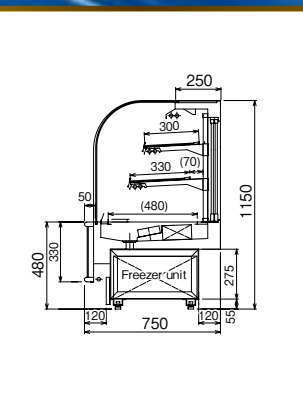
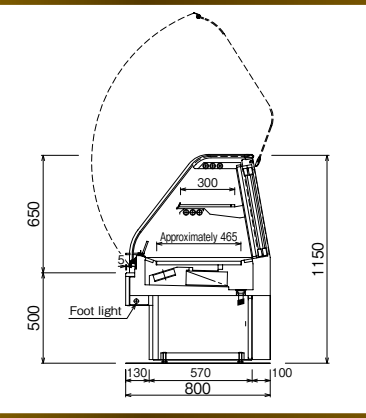
SGC-[8·6]6FKA5R



In order to create an appealing sales floor

Custom made showcases that Fukushima recommends

# ORDER SHOWCASE





# Detached Vertical Showcase for Convenience Stores and Small Scale Stores

Provides both efficient use of space and highly favorable presentations

## Open showcases CV series



- Improved "Golden Space" shelf display space
- Dual layer air curtain increases energy conservation and cooling ability.
- A slim type (CVU) with a main unit depth of 660mm has been added to the lineup.
- Can accommodate 3°C, the control temperature for chilled products
- A smooth, curved form that provides a clean design

### Host Controller HC2S mini for small stores

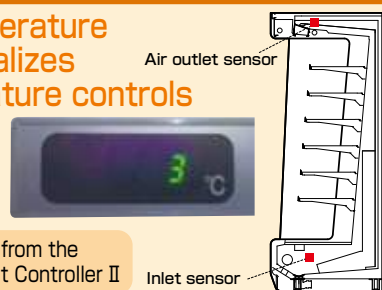
- Monitoring of equipment up to 31 units
- Collectively monitoring temperature, humidity, pressure and the amount of power
- Preserving past record up to 4 days
- Centralized control of showcase, refrigerator, and prefab refrigerators
- Collective control of anti-condensation heater control and others



### Temperature Detection Controller

Unique 2 point temperature detection control realizes appropriate temperature controls

- Compressor abnormality: COP
- Showcase temperature too high: Hi
- Sensor abnormality: E1

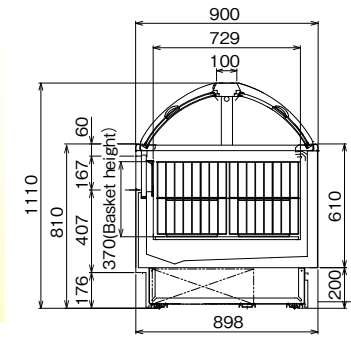


Centralized temperature control from the office possible by using the Host Controller II



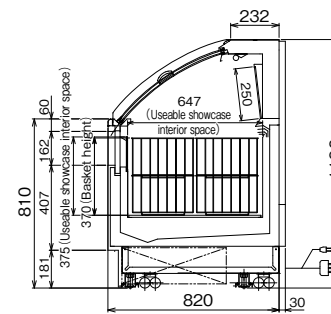
Description of icons: Single phase 100V, Three phase 200V, Dual power, Requires dual power sources, Lighting, Includes lighting for all shelves, Glass shelves, Slide Sliding shelves, Order Built to order

## Inverter Plug-In type Dome type ice cream showcase Includes evaporator -25~-20°C Ice



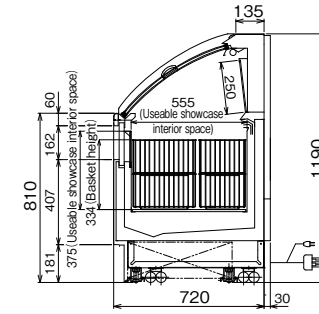
**DMC-76FNFTAS (Dual sided type)**  
● Exterior dimensions : W2,100 × D898 × H1,110mm

- Dramatically improves condensation functionality through the use of a special thermal insulation film
- Low noise / Low vibration scroll freezer unit
- An easy to read digital temperature display, the same as the CV series
- Includes drain evaporator unit
- Incorporates an inverter freezer unit



- Incorporates an inverter freezer unit
- Includes drain evaporator unit

**DMK-66FNFTAS (Single sided type)**  
● Exterior dimensions : W1,800 × D850 × H1,200mm

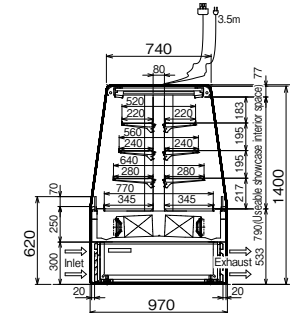


- Incorporates an inverter freezer unit
- Includes drain evaporator unit

**DMU-67FNFTAS (Single sided type)**  
● Exterior dimensions : W1,800 × D750 × H1,190mm



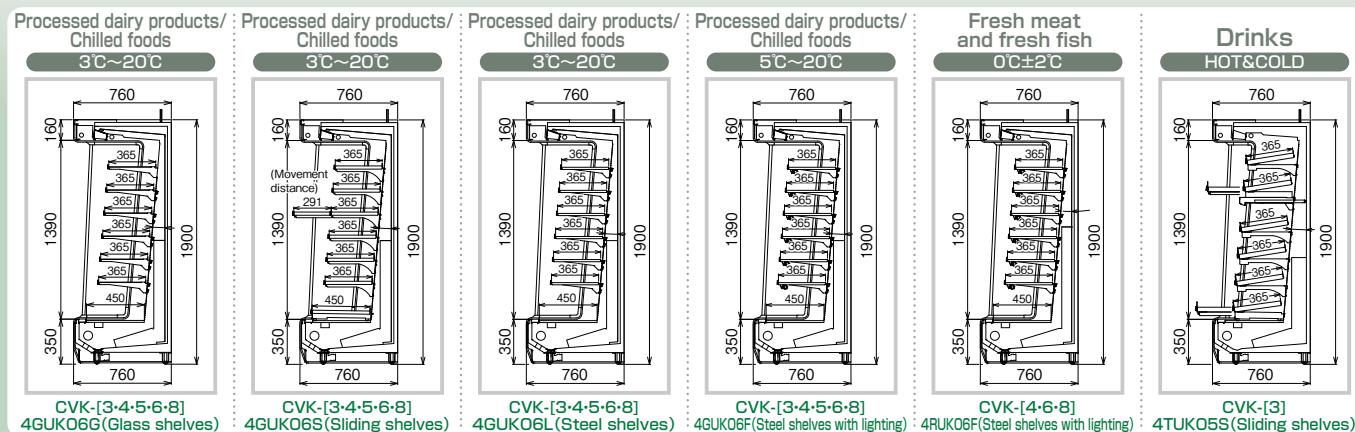
## Inverter Plug-In type Dessert Island Showcases 5~20°C Dessert



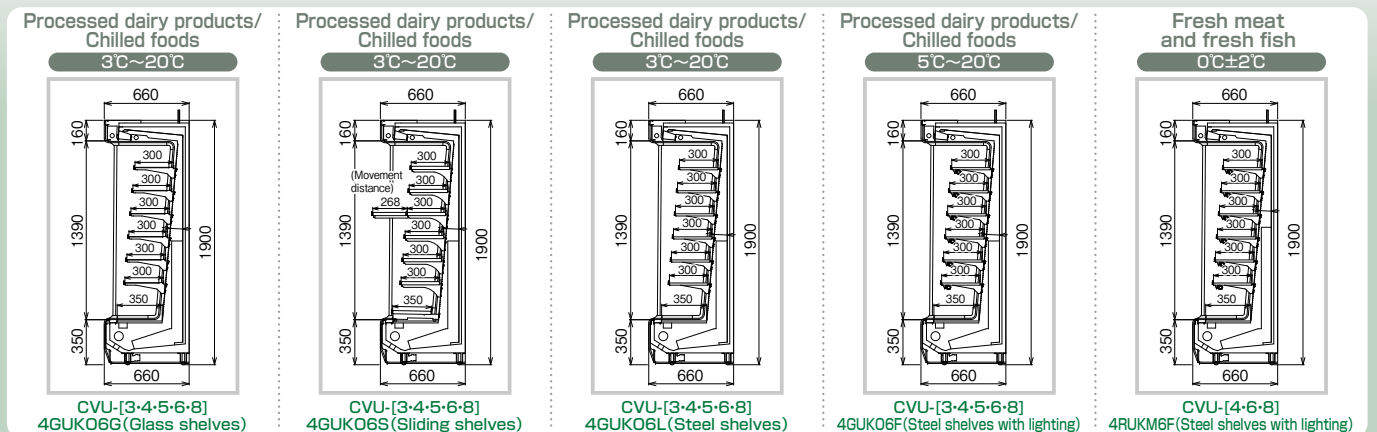
**RMC-42GUPA3S**  
● Exterior dimensions : W1,380 × D970 × H1,410mm

- Change temperatures of the main and corner units with a touch of finger (desserts and boxed meals)
- Incorporates an acrylic lighting shade structure that can be detached with a touch of a finger, making changing lighting lamps easy.
- A new evaporator unit that doesn't use a heater realizes drastic energy savings
- Equipped with inverter refrigerating machine Approximately 35% energy savings compared to regular speed model
- Includes drain evaporator unit

### CVK series Depth 760mm



### CVU series Depth 660mm

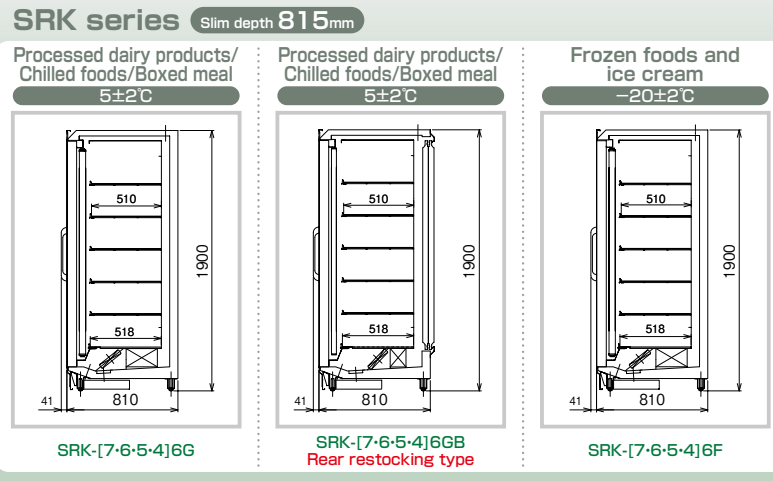




# Detached Vertical Showcase for Convenience Stores and Small Scale Stores

## Glass Door display case SR series

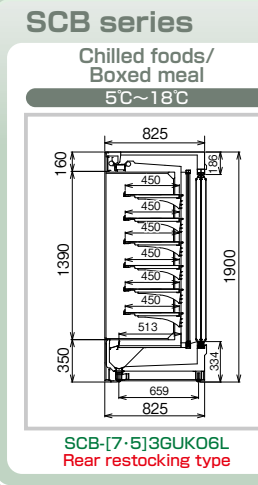
Anti-condensation heater control standard



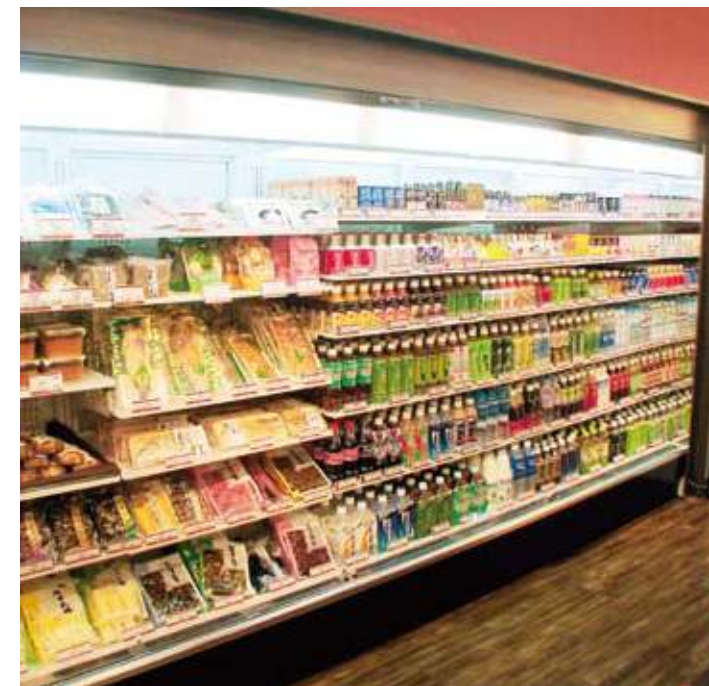
<SRK series>  
SRK-76F  
\*Picture shows 7 shelf unit

## Rear restocking type Open showcases

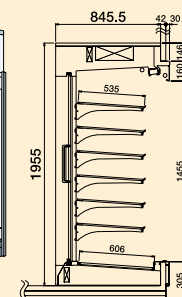
## SCB series



SCB-53GUK06L  
\*There is also the SCB-73GUK06L (width: 2,250mm type)



## Open Walk-in Showcases



- Because this as an open type showcase with no doors, products are easier to see and multiple people can shop at the same time.
- Products can be restocked from the rear for efficient operations.
- Large numbers of products can be kept pre-cooled.

## Walk-in Showcases



- With a glass door, saves energy by achieving stable cooling regardless of the air conditioning of the store itself.
- Products can be restocked from the rear for efficient operations.

Remote type showcase

Plug-In type showcase

Remote type showcase

Plug-In type showcase



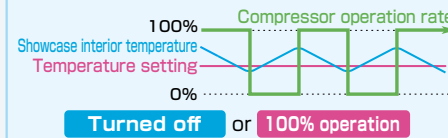
# Plug-In type



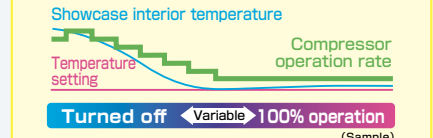
Plug-In type showcases should be selected based on eco-friendliness!

Fukushima combines both energy savings and freshness control by incorporating inverters\*  
\*IM, ME, IE series only

Only ON/OFF controls were available up until now



Inverter control is the new standard



Incorporates a R404 Unit

The showcase incorporates the new R404A refrigeration unit which environmentally friendly with zero ozone depletion potential.

Plug-In type Inverter Island Showcases

## IM series

Energy saving showcases that meet sales floor needs. Can accommodate a wide range of uses. With 4 faces and being movable, the showcases can be flexibly used to create corners and sales sections.

Achieves drastic energy reduction through inverter control.

Incorporates the new R404A freezing unit Includes drain evaporator unit

- Frozen foods
- Fresh meat and fresh fish
- Chilled foods
- Daily dish
- Ice cream

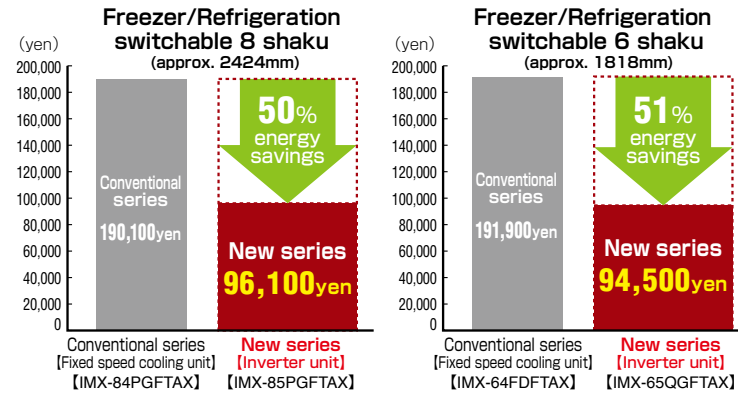


Switchable between freezer / refrigerator Wide range type

Switchable between ice cream, freezer / refrigerator Super wide range type



### Annual electricity bill comparison



Standing glass 200mm Switchable between ice cream, freezer/refrigerator Super wide range type -25~15°C Ice cream/Frozen foods/Fresh meat and fresh fish/Chilled foods/Daily dish

Standing glass 200mm

Width 900mm

**IMC-35QWFSAX**  
 ● Exterior dimensions : W900 × D900 × H850mm

Width 1,200mm

**IMC-45QWFSAX**  
 ● Exterior dimensions : W1,200 × D900 × H850mm

Width 1,500mm

**IMC-55QWFTAX**  
 ● Exterior dimensions : W1,500 × D900 × H850mm

Width 1,800mm

**IMC-65QWFTAX**  
 ● Exterior dimensions : W1,800 × D900 × H850mm

Width 900mm

**IMC-35QWFTAX**  
 ● Exterior dimensions : W900 × D900 × H850mm

Width 1,200mm

**IMC-45QWFTAX**  
 ● Exterior dimensions : W1,200 × D900 × H850mm

Width 1,500mm

**IMC-55QWFTAX**  
 ● Exterior dimensions : W1,500 × D1,100 × H850mm

Width 1,800mm

**IMC-65QWFTAX**  
 ● Exterior dimensions : W1,800 × D1,100 × H850mm

\*Cross-section specifications are the same as P67 standing glass 200mm

Standing glass 100mm Switchable between ice cream, freezer/refrigerator Super wide range type -23~15°C Ice cream/Frozen foods/Fresh meat and fresh fish/Chilled foods/Daily dish

Standing glass 100mm

Width 1,500mm

**IMC-55QGFTAX**  
 ● Exterior dimensions : W1,500 × D900 × H850mm

Width 1,800mm

**IMC-65QGFTAX**  
 ● Exterior dimensions : W1,800 × D900 × H850mm

Width 1,500mm

**IMX-55QGFTAX**  
 ● Exterior dimensions : W1,500 × D1,100 × H850mm

Width 1,800mm

**IMX-65QGFTAX**  
 ● Exterior dimensions : W1,800 × D1,100 × H850mm

Description of icons: Single phase 100V, Three phase 200V, Dual power, Requires dual power sources, Lighting, Includes lighting for all shelves, Glass shelves, Slide shelves, Order, Built to order

Standing glass 200mm Switchable between freezer / refrigerator Wide range type -20~15°C Frozen foods/Fresh meat and fresh fish/Chilled foods/Daily dish

Standing glass 200mm

Width 1,500mm

**IMC-55PWFSAX**  
 ● Exterior dimensions : W1,500 × D900 × H850mm

Width 1,800mm

**IMC-65PWFSAX**  
 ● Exterior dimensions : W1,800 × D900 × H850mm

Width 1,500mm

**IMX-55PWFSAX**  
 ● Exterior dimensions : W1,500 × D1,100 × H850mm

Width 1,800mm

**IMX-65PWFSAX**  
 ● Exterior dimensions : W1,800 × D1,100 × H850mm

Standing glass 100mm Switchable between freezer / refrigerator Wide range type -20~15°C Frozen foods/Fresh meat and fresh fish/Chilled foods/Daily dish

Standing glass 100mm

Width 1,500mm

**IMC-55PGFSAX**  
 ● Exterior dimensions : W1,500 × D900 × H850mm

Width 1,800mm

**IMC-65PGFSAX**  
 ● Exterior dimensions : W1,800 × D900 × H850mm

Width 1,500mm

**IMX-55PGFSAX**  
 ● Exterior dimensions : W1,500 × D1,100 × H850mm

Width 1,800mm

**IMX-65PGFSAX**  
 ● Exterior dimensions : W1,800 × D1,100 × H850mm

Standing glass 200mm Switchable between freezer / refrigerator Wide range type -20~15°C Frozen foods/Fresh meat and fresh fish/Chilled foods/Daily dish

Standing glass 200mm

Width 1,500mm

**IMC-55PWFTAX**  
 ● Exterior dimensions : W1,500 × D900 × H850mm

Width 1,800mm

**IMC-65PWFTAX**  
 ● Exterior dimensions : W1,800 × D900 × H850mm

Width 2,400mm

**IMC-85PWFTAX**  
 ● Exterior dimensions : W2,400 × D900 × H850mm

Width 1,500mm

**IMX-55PWFTAX**  
 ● Exterior dimensions : W1,500 × D1,100 × H850mm

Width 1,800mm

**IMX-65PWFTAX**  
 ● Exterior dimensions : W1,800 × D1,100 × H850mm

Width 2,400mm

**IMX-85PWFTAX**  
 ● Exterior dimensions : W2,400 × D1,100 × H850mm

Standing glass 100mm Switchable between freezer / refrigerator Wide range type -20~15°C Frozen foods/Fresh meat and fresh fish/Chilled foods/Daily dish

Standing glass 100mm

Width 1,500mm

**IMC-55PGFTAX**  
 ● Exterior dimensions : W1,500 × D900 × H850mm

Width 1,800mm

**IMC-65PGFTAX**  
 ● Exterior dimensions : W1,800 × D900 × H850mm

Width 2,400mm

**IMC-85PGFTAX**  
 ● Exterior dimensions : W2,400 × D900 × H850mm

Width 1,500mm

**IMX-55PGFTAX**  
 ● Exterior dimensions : W1,500 × D1,100 × H850mm

Width 1,800mm

**IMX-65PGFTAX**  
 ● Exterior dimensions : W1,800 × D1,100 × H850mm

Width 2,400mm

**IMX-85PGFTAX**  
 ● Exterior dimensions : W2,400 × D1,100 × H850mm

Remote type showcase

Plug-In type showcase

Remote type showcase

Plug-In type showcase





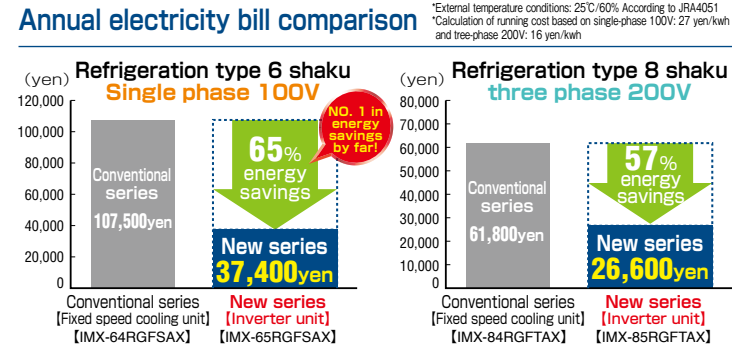
Plug-In type showcases should be selected based on eco-friendliness!

Fukushima combines both energy savings and freshness control by incorporating inverters\*  
\*IM, ME, IE series only

Fresh meat and fresh fish  
Chilled foods Daily dish



## Refrigeration type



Standing glass 200mm Refrigeration type -2~15°C Fresh meat and fresh fish/Chilled foods/Daily dish

Width 1,200mm

Standing glass 200mm

Single phase Order  
**IMC-45RWFSAX**  
●Exterior dimensions : W1,200 × D900 × H850mm

Single phase Order  
**IMX-45RWFSAX**  
●Exterior dimensions : W1,200 × D1,100 × H850mm

Width 1,500mm

Single phase Order  
**IMC-55RWFSAX**  
●Exterior dimensions : W1,500 × D900 × H850mm

Single phase Order  
**IMX-55RWFSAX**  
●Exterior dimensions : W1,500 × D1,100 × H850mm

Width 1,800mm

Single phase Order  
**IMC-65RWFSAX**  
●Exterior dimensions : W1,800 × D900 × H850mm

Single phase Order  
**IMX-65RWFSAX**  
●Exterior dimensions : W1,800 × D1,100 × H850mm

Width 2,400mm

Single phase Order  
**IMC-85RWFSAX**  
●Exterior dimensions : W2,400 × D900 × H850mm

Single phase Order  
**IMX-85RWFSAX**  
●Exterior dimensions : W2,400 × D1,100 × H850mm

Standing glass 100mm Refrigeration type -2~15°C Fresh meat and fresh fish/Chilled foods/Daily dish

Width 1,200mm

Standing glass 100mm

Single phase Order  
**IMC-45RGFSAX**  
●Exterior dimensions : W1,200 × D900 × H850mm

Single phase Order  
**IMX-45RGFSAX**  
●Exterior dimensions : W1,200 × D1,100 × H850mm

Width 1,500mm

Single phase Order  
**IMC-55RGFSAX**  
●Exterior dimensions : W1,500 × D900 × H850mm

Single phase Order  
**IMX-55RGFSAX**  
●Exterior dimensions : W1,500 × D1,100 × H850mm

Width 1,800mm

Single phase Order  
**IMC-65RGFSAX**  
●Exterior dimensions : W1,800 × D900 × H850mm

Single phase Order  
**IMX-65RGFSAX**  
●Exterior dimensions : W1,800 × D1,100 × H850mm

Width 2,400mm

Single phase Order  
**IMC-85RGFSAX**  
●Exterior dimensions : W2,400 × D900 × H850mm

Single phase Order  
**IMX-85RGFSAX**  
●Exterior dimensions : W2,400 × D1,100 × H850mm

Description of icons: Single phase 100V, Three phase 200V, Dual power, Requires dual power sources, Lighting, Includes lighting for all shelves, Glass shelves, Slide shelves, Order, Built to order

Standing glass 200mm Refrigeration type -2~15°C Fresh meat and fresh fish/Chilled foods/Daily dish

Width 1,200mm

Standing glass 200mm

Three phase Order  
**IMC-45RWFTAX**  
●Exterior dimensions : W1,200 × D900 × H850mm

Three phase Order  
**IMX-45RWFTAX**  
●Exterior dimensions : W1,200 × D1,100 × H850mm

Width 1,500mm

Three phase Order  
**IMC-55RWFTAX**  
●Exterior dimensions : W1,500 × D900 × H850mm

Three phase Order  
**IMX-55RWFTAX**  
●Exterior dimensions : W1,500 × D1,100 × H850mm

Width 1,800mm

Three phase Order  
**IMC-65RWFTAX**  
●Exterior dimensions : W1,800 × D900 × H850mm

Three phase Order  
**IMX-65RWFTAX**  
●Exterior dimensions : W1,800 × D1,100 × H850mm

Width 2,400mm

Three phase Order  
**IMC-85RWFTAX**  
●Exterior dimensions : W2,400 × D900 × H850mm

Three phase Order  
**IMX-85RWFTAX**  
●Exterior dimensions : W2,400 × D1,100 × H850mm

Standing glass 100mm Refrigeration type -2~15°C Fresh meat and fresh fish/Chilled foods/Daily dish

Width 1,200mm

Standing glass 100mm

Three phase Order  
**IMC-45RGFTAX**  
●Exterior dimensions : W1,200 × D900 × H850mm

Three phase Order  
**IMX-45RGFTAX**  
●Exterior dimensions : W1,200 × D1,100 × H850mm

Width 1,500mm

Three phase Order  
**IMC-55RGFTAX**  
●Exterior dimensions : W1,500 × D900 × H850mm

Three phase Order  
**IMX-55RGFTAX**  
●Exterior dimensions : W1,500 × D1,100 × H850mm

Width 1,800mm

Three phase Order  
**IMC-65RGFTAX**  
●Exterior dimensions : W1,800 × D900 × H850mm

Three phase Order  
**IMX-65RGFTAX**  
●Exterior dimensions : W1,800 × D1,100 × H850mm

Width 2,400mm

Three phase Order  
**IMC-85RGFTAX**  
●Exterior dimensions : W2,400 × D900 × H850mm

Three phase Order  
**IMX-85RGFTAX**  
●Exterior dimensions : W2,400 × D1,100 × H850mm

Remote type showcase

Remote type showcase

Plug-In type showcase

Plug-In type showcase



Inverter Multi-deck Open Spot Showcase

## ME series

### Fukushima combines both energy savings and freshness control by incorporating inverters

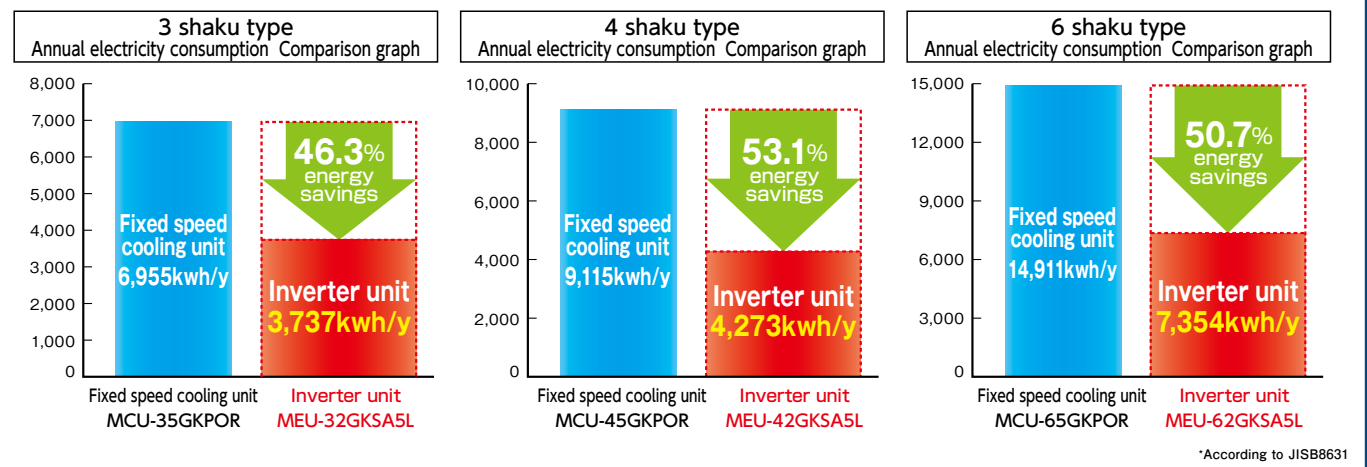
- Single-phase 100V specification is now available also in 121cm type (can support 3°C)
- Achieving approximately 46~53% energy savings compared to the MC series (regular speed model)

Night Cover Standard Device

With Drainage Evaporator Device

3°C ~ 20°C Wide range Daytime delivery~Lunchbox

It is so **ECO** thanks to the inverter ● Annual electricity consumption Comparison graph ●



- Achieving reduction of temperature irregularity in the refrigerator by adoption of the double air curtain
- Standardly equipped with LED lighting

Width 1,545mm • 1,755mm 3~20°C Chilled foods/Boxed meal



MEU-52GKTA5L

3~20°C Chilled foods/Boxed meal **NEW**  
MEU-52GKTA5L  
● Exterior dimensions : W1,545 × D600 × H1,900mm

3~20°C Chilled foods/Boxed meal **NEW**  
MEU-62GKTA5L  
● Exterior dimensions : W1,755 × D600 × H1,900mm



MEK-62GKTA5L

3~20°C Chilled foods/Boxed meal **NEW**  
Thick depth 750mm MEK-62GKTA5L  
● Exterior dimensions : W1,545 × D750 × H1,900mm

3~20°C Chilled foods/Boxed meal **NEW**  
Thick depth 750mm MEK-62GKTA5L  
● Exterior dimensions : W1,755 × D750 × H1,900mm

Description of icons: Single phase 100V, Three phase 200V, Dual power Requires dual power sources, Lighting Includes lighting for all shelves, Glass shelves, Slide shelves, Sliding shelves, Order Built to order

### Shelves variation

It is possible to choose as option between glass shelves, slide shelves or inclining slide shelves according to applications.

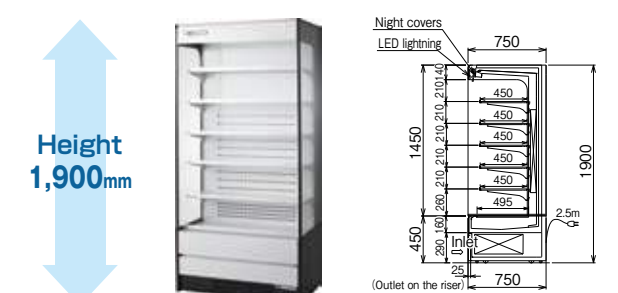


Width 900mm 3~20°C Chilled foods/Boxed meal



3~20°C Chilled foods/Boxed meal **NEW**  
MEU-32GKSA5L  
● Exterior dimensions : W900 × D600 × H1,900mm

3~20°C Chilled foods/Boxed meal **NEW**  
MEU-32GKTA5L  
● Exterior dimensions : W900 × D600 × H1,900mm



3~20°C Chilled foods/Boxed meal **NEW**  
Thick depth 750mm MEK-32GKSA5L  
● Exterior dimensions : W900 × D750 × H1,900mm

3~20°C Chilled foods/Boxed meal **NEW**  
Thick depth 750mm MEK-32GKTA5L  
● Exterior dimensions : W900 × D750 × H1,900mm

Width 1,200mm 3~20°C Chilled foods/Boxed meal



3~20°C Chilled foods/Boxed meal **NEW**  
MEU-42GKSA5L  
● Exterior dimensions : W1,200 × D600 × H1,900mm

3~20°C Chilled foods/Boxed meal **NEW**  
MEU-42GKTA5L  
● Exterior dimensions : W1,200 × D600 × H1,900mm



3~20°C Chilled foods/Boxed meal **NEW**  
Thick depth 750mm MEK-42GKSA5L  
● Exterior dimensions : W1,200 × D750 × H1,900mm

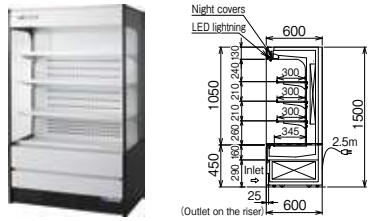
3~20°C Chilled foods/Boxed meal **NEW**  
Thick depth 750mm MEK-42GKTA5L  
● Exterior dimensions : W1,200 × D750 × H1,900mm



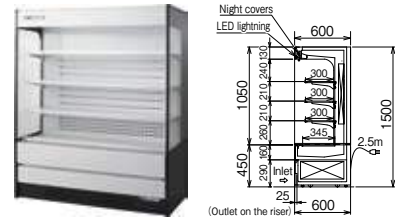
Width 900mm • 1,200mm

3~20°C Chilled foods/Boxed meal

Height 1,500mm



Height 1,500mm



3~20°C Chilled foods-Boxed meal  
**MEU-32GHTA3L**  
● Exterior dimensions : W900 × D600 × H1,500mm

3~20°C Chilled foods-Boxed meal  
**MEU-32GHTA3L**  
● Exterior dimensions : W900 × D600 × H1,500mm

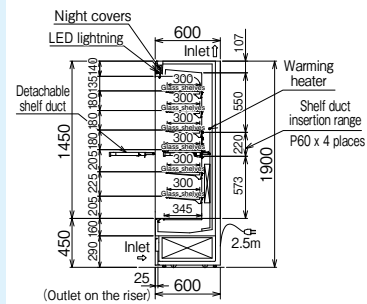
3~20°C Chilled foods-Boxed meal  
**MEU-42GHTA3L**  
● Exterior dimensions : W1,200 × D600 × H1,500mm

3~20°C Chilled foods-Boxed meal  
**MEU-42GHTA3L**  
● Exterior dimensions : W1,200 × D600 × H1,500mm

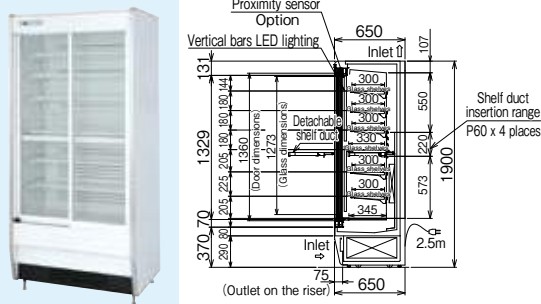
## Lower case Double temperature system type

Upper case 18°C Boxed meal  
Lower case Switch between 5 and 18°C Chilled foods-Boxed meal switchable

Height 1,900mm



Height 1,900mm



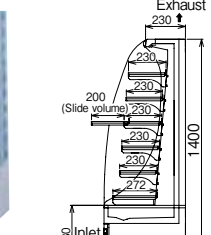
Upper case 18°C Boxed meal  
Lower case Switch between 5 and 18°C Chilled foods-Boxed meal switchable  
**MEU-32WKSAG6**  
● Exterior dimensions : W900 × D600 × H1,900mm

Upper case 18°C Boxed meal  
Lower case Switch between 5 and 18°C Chilled foods-Boxed meal switchable  
**MEU-32WKSAG6S**  
● Exterior dimensions : W915 × D650 × H1,900mm

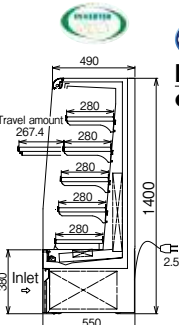
- Maintaining lunchbox temperature between 18 ± 2°C by control of an original warming heater
- For the lower case it is possible to change between daytime delivery and lunchbox with a transition switch
- Adopting removable type shelf duct ● Glass shelf design ※ outdoor air conditions 18 ~ 27°C humidity: 70%

Drink case Compact sliding shelf

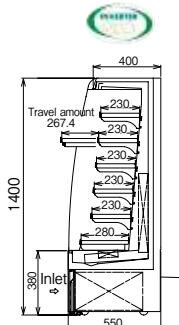
7~12°C Drink



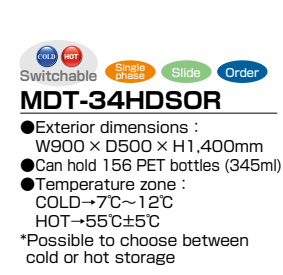
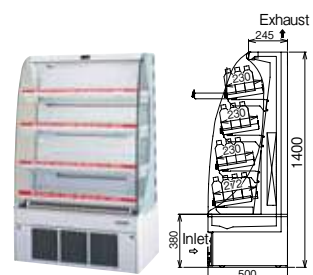
COLD Single phase Slide Order  
**MDT-34GDSOR**  
● Exterior dimensions : W900 × D500 × H1,400mm



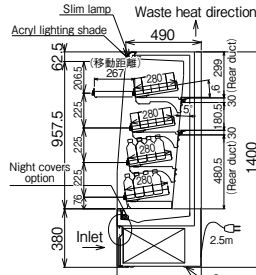
COLD Single phase Slide Order  
**MET-31GDSS4S**  
● Exterior dimensions : W900 × D550 × H1,400mm



COLD Three phase Slide Order  
**MET-31GDTN5S**  
● Exterior dimensions : W900 × D550 × H1,400mm  
**On sale soon**



Switchable Single phase Slide Order  
**MDT-34HDSOR**  
● Exterior dimensions : W900 × D500 × H1,400mm  
● Can hold 156 PET bottles (345ml)  
● Temperature zone : COLD → 7°C ~ 12°C HOT → 5°C ± 5°C  
\*Possible to choose between cold or hot storage



Switchable Single phase Slide Order  
**MET-31TDSS3S**  
● Exterior dimensions : W900 × D550 × H1,400mm  
● Can hold 224 PET bottles (345ml)  
● Temperature zone : COLD → 5°C ~ 10°C HOT → 5°C ± 5°C  
\*Single phase 100V 15A  
\*Cold storage and warm storage can be used at the same time

Description of icons: Single phase 100V, Three phase 200V, Dual power, Requires dual power sources, Lighting, Includes lighting for all shelves, Glass shelves, Slide shelves, Order, Built to order

## Front facing closed showcases AD series

Select from a wide variety of optional sheet coverings for the exterior panel

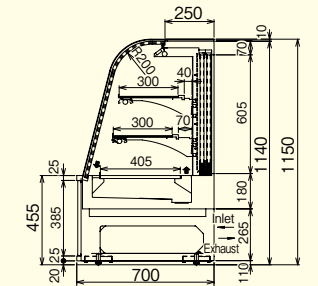
3~15°C Sweets / Deli

**ADT-61GTNS2S** Single phase  
● Exterior dimensions : W1,800 × D700 × H1,150mm

**ADT-51GTNS2S** Single phase  
● Exterior dimensions : W1,500 × D700 × H1,150mm



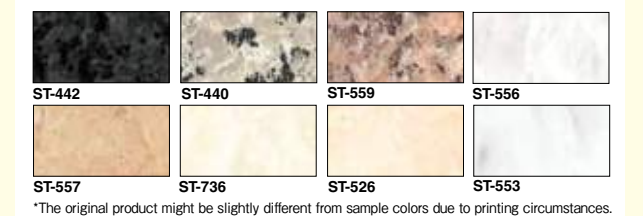
\*Picture shows an exterior DI-NOC specification ST442 black graining cover



The 100 caster easy to move (supporting options)  
With casters easy to move (Height of the model is an additional 90mm for a total 1240mm)



Exterior surface sheet Can be chosen as option \*standard item ST-442



\*The original product might be slightly different from sample colors due to printing circumstances.

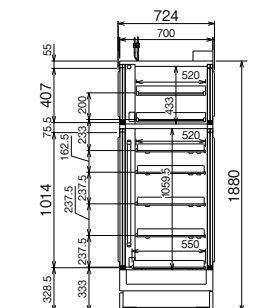
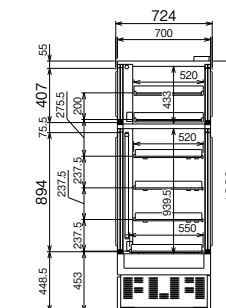
## Plug-In type/Remote type Double temperature pass through showcase



**MSP-090TGWSR Plug-In type** Single phase Order  
● Exterior dimensions : W900 × D700 × H1,880mm

**MSP-090TGWSS Remote type** Single phase Order  
● Exterior dimensions : W900 × D700 × H1,880mm

- 3°C ~ 15°C specification
- Only the upper chamber can be switched between 55 and ± 5°C
- Lineup of refrigerator internal chamber and separate placement
- Using auto-close door on customers' side (with alarm sound)
- Lower chamber: As a standard, it's equipped with roller shelf



customers' side (Plug-In type)

Seller's side (Plug-In type)

MSP-090TGWSR (Plug-In type)

MSP-090TGWSS (Remote type)

Remote type showcase

Plug-In type showcase



## Multi-deck / Semi Multi-deck Open Showcases

### KM·HM series

Can be used in any number of situations from stocking 3 different types of fresh products, special event sales and island displays. The low multi-deck cases can be used facing the open showcases.

Multi-deck cases are useful for stocking large numbers of products and effective presentation.

Low multi-deck cases can be used by itself or facing each other allowing easy access to the products.

An improved machine room panel also improves maintainability.

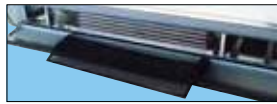
Can accommodate water cooling specifications. \*Requires separate water cooling construction.

#### KM/HM series

Through flexible combinations, a wide range of selling space designs are possible.

##### Maintainability

**Drawer type condenser filter**  
Improved maintainability through a newly designed drawer type condenser filter.



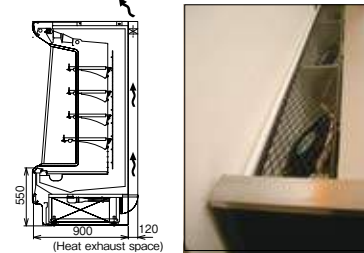
##### Energy saving Electronic ballasts

With standard electronic ballasts installed behind the shelves, 25% less energy is used for lighting when compared to conventional models.



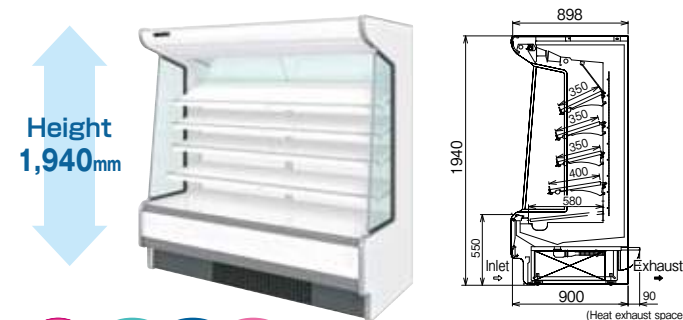
##### Rear ducts (Options)

Heat exhaust is released upwards allowing the showcases to be flush against the wall



### Multi-deck Open Showcases (KM series)

Refrigeration type **-2~-2°C** Fresh meat and fresh fish



Depth 900mm  
**KMC-[8-6]66RKT4S**  
● Exterior dimensions : W1,909 × D900 × H1,940mm

Depth 1,100mm  
**KMX-[8-6]66RKT4S**  
● Exterior dimensions : W1,909 × D1,100 × H1,940mm

Refrigeration type **7~12°C** Fruits and vegetables

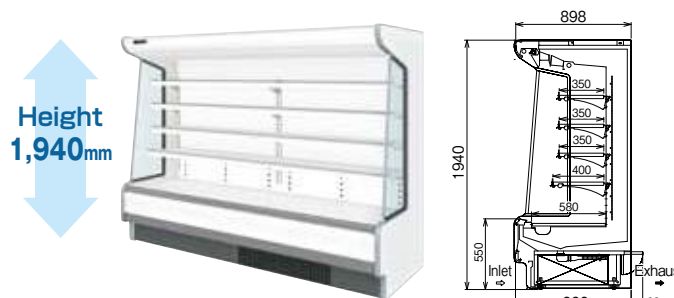


Depth 900mm  
**KMC-[8-6]66EKT3S**  
● Exterior dimensions : W1,909 × D900 × H1,940mm(W2,518 × D900 × H1,940mm)

Depth 1,100mm  
**KMX-[8-6]66EKT3S**  
● Exterior dimensions : W1,909 × D1,100 × H1,940mm(W2,518 × D1,100 × H1,940mm)

### Semi Multi-deck Open Showcases (HM series)

Refrigeration type **3~7°C** Processed dairy products/Chilled foods



Depth 900mm  
**KMC-[8-6]66GKT04S**  
● Exterior dimensions : W1,909 × D900 × H1,940mm(W2,518 × D900 × H1,940mm)

Depth 1,100mm  
**KMX-[8-6]66GKT04S**  
● Exterior dimensions : W1,909 × D1,100 × H1,940mm(W2,518 × D1,100 × H1,940mm)

Refrigeration type **-2~-2°C** Fresh meat and fresh fish



Depth 900mm  
**HMC-[8-6]5RLT01S**  
● Exterior dimensions : W1,909 × D900 × H1,250mm(W2,518 × D900 × H1,250mm)

Depth 1,100mm  
**HMX-[8-6]5RLT01S**  
● Exterior dimensions : W1,909 × D1,100 × H1,250mm(W2,518 × D1,100 × H1,250mm)

Description of icons: Single phase 100V, Three phase 200V, Dual power, Requires dual power sources, Lighting, Includes lighting for all shelves, Glass shelves, Slide shelves, Sliding shelves, Order, Built to order

#### Refrigeration type

3~7°C Processed dairy products/Chilled foods



Depth 900mm  
**HMC-[8-6]5GLT01S**  
● Exterior dimensions : W1,909 × D900 × H1,250mm(W2,518 × D900 × H1,250mm)

Depth 1,100mm  
**HMX-[8-6]5GLT01S**  
● Exterior dimensions : W1,909 × D1,100 × H1,250mm(W2,518 × D1,100 × H1,250mm)



Depth 900mm  
**HMC-[8-6]5GUT02S**  
● Exterior dimensions : W1,909 × D900 × H1,350mm(W2,518 × D900 × H1,350mm)

Depth 1,100mm  
**HMX-[8-6]5GUT02S**  
● Exterior dimensions : W1,909 × D1,100 × H1,350mm(W2,518 × D1,100 × H1,350mm)

Refrigeration type **3~7°C** Processed dairy products/Chilled foods



Depth 900mm  
**HMC-[8-6]5GHT03S**  
● Exterior dimensions : W1,909 × D900 × H1,550mm(W2,518 × D900 × H1,550mm)

Depth 1,100mm  
**HMX-[8-6]5GHT03S**  
● Exterior dimensions : W1,909 × D1,100 × H1,550mm(W2,518 × D1,100 × H1,550mm)

Refrigeration type **3~7°C** Processed dairy products/Chilled foods



Depth 900mm  
**HMC-[8-6]5GET04S**  
● Exterior dimensions : W1,909 × D900 × H1,650mm(W2,518 × D900 × H1,650mm)

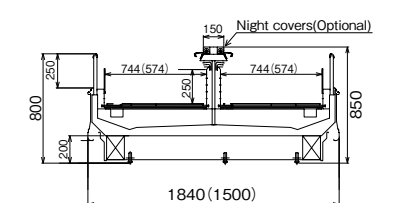
Depth 1,100mm  
**HMX-[8-6]5GET04S**  
● Exterior dimensions : W1,909 × D1,100 × H1,650mm(W2,518 × D1,100 × H1,650mm)

### Plug-in type Inverter Island Showcase IE series

Achieves drastic energy reduction through inverter control. Also contributes to cold aisle measures on the sales floor as well as reducing freezer unit volume and construction costs.

Freezer type Includes drain evaporator unit

-25~-18°C Ice cream/Frozen foods



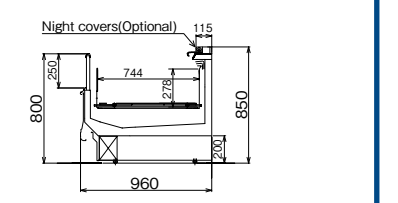
Depth 900mm  
**IEW-61FEBTAX**  
● Exterior dimensions : W1,829 + (70×2) × D1,500 × H850mm

Depth 900mm  
**IEW-81FEBTAX**  
● Exterior dimensions : W2,438 + (70×2) × D1,500 × H850mm



Depth 900mm  
**IEL-61FEBTAX**  
● Exterior dimensions : W1,829 + (70×2) × D1,840 × H850mm

Depth 900mm  
**IEE-51FWSTAX**  
● Exterior dimensions : W1,360 + (70×2) × D960 × H850mm



Depth 900mm  
**IEE-61FLSTAX**  
● Exterior dimensions : W1,700 + (70×2) × D960 × H850mm

\*Wood grain sheet covering is also available. \*Please allow 90mm of exhaust space behind KM and HM series showcases.

Remote type showcase

Plug-In type showcase

Remote type showcase

Plug-In type showcase



## Serve-over Type Open Showcases MF·MRN series

Create sales floor corners that attract the attention of customers.  
Also recommended for shops in stations, airports and highway service areas.

Arranged in parallel lines as an special event corner. Ideal for special event sales using the ends. For selling local specialty products in gift stores.

**MF series** High specifications and high performance. Can accommodate a wide variety of sales floors.

### Performance

**Increased chilling performance**  
Increased sustained chilling ability through a new evaporator unit!  
**Improved defrosting performance**  
Reliable defrost cycle design  
**Standard magnetic vents**  
Saves energy and improves freezer cycle quality!  
**Strengthened air curtain**  
Increased air outlet speed!  
Showcase interior fans are now DC (saves energy in the fresh foods temperature zone)

### Showcase interior lighting standard



Improved condenser performance



**Deck pan standard**  
Easy product stocking with deck pans on the bottom surface!



### Maintainability

**Automatic drain evaporator unit standard**  
Improved maintainability with 20% increase in evaporator performance in comparison with conventional models!



**Drawer type condenser filter**  
Improved maintainability through a newly designed drawer type condenser filter.



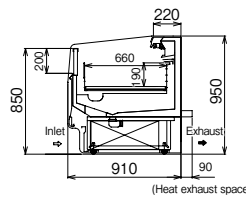
### Placement

**Utilizes a single power supply**  
Single phase 100V or three phase 200V single power supply  
**Improved heat exhaust processing ability**  
Redesigned and improved heat exhaust processing method (front intake, rear and front exhaust) to improve performance!

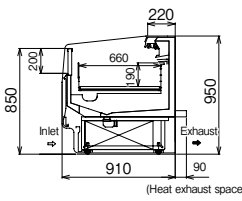
## Serve-over Type Open Showcases (MF series) Includes drain evaporator unit

**Freezer type** -20~-18°C Frozen foods | -25~-20°C Ice cream/Frozen foods

Depth 910mm



Depth 910mm



### MFC-[8·6]5SGFTXS

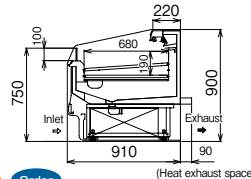
●Exterior dimensions : W1,829(2,438) × D910 × H950mm

### MFC-65FGFTXS

●Exterior dimensions : W1,829 + (40×2) × D910 × H950mm

**Refrigeration type** -2~5°C Fresh meat and fresh fish/Chilled foods

Depth 910mm



### MFC-85ROBTXS

●Exterior dimensions : W2,438 + (40×2) × D910 × H900mm

### MFC-65ROBSXS

●Exterior dimensions : W1,829 + (40×2) × D910 × H900mm

### MFC-[5·4]5ROBSXS

●Exterior dimensions : W1,219(1,524) + (40×2) × D910 × H900mm

### MFC-65ROBTXS

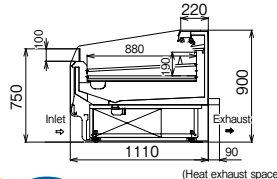
●Exterior dimensions : W1,829 + (40×2) × D910 × H900mm

### MFC-[5·4]5ROBTXS

●Exterior dimensions : W1,219(1,524) + (40×2) × D910 × H900mm

**Refrigeration type** -2~5°C Fresh meat and fresh fish/Chilled foods

Depth 1,110mm



### MFX-85ROBTXS

●Exterior dimensions : W2,438 + (40×2) × D1,110 × H900mm

### MFX-65ROBTXS

●Exterior dimensions : W1,829 + (40×2) × D1,110 × H900mm

### MFX-[5·4]5ROBSXS

●Exterior dimensions : W1,219(1,524) + (40×2) × D1,110 × H900mm

### MFX-65ROBSXS

●Exterior dimensions : W1,829 + (40×2) × D1,110 × H900mm

Description of icons: Single phase 100V, Three phase 200V, Dual power, Requires dual power sources, Lighting, Includes lighting for all shelves, Glass shelves, Slide, Sliding shelves, Order, Built to order

Cooling possible up to ice temperature zone with a 100V power supply

Achieving 24% (compared to current machine: 76%) energy savings on the 180cm type by installing an inverter compressor



Refrigerator inner capacity UP (compared to current machine: 118%)

As a standard, it's equipped with LED lightning

## Serve-over Type Open Showcases (MRN-Q series) With drainage tank

Freezer/Refrigeration switchable (settings) -25~-15°C Ice cream/Fresh meat and fresh fish/Chilled foods



### MRN-62QWBSPS

●Exterior dimensions : W1,790 × D900 × H890mm



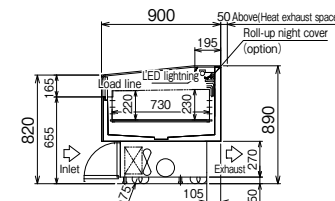
### MRN-52QWBSPS

●Exterior dimensions : W1,490 × D900 × H890mm



### MRN-42QWBSPS

●Exterior dimensions : W1,190 × D900 × H890mm



Wide range of temperature zones (Refrigeration types 3°C~20°C / Switchable refrigeration types -25°C~5°C)

Energy savings through showcase interior fan motors being powered by DC power supply

## Serve-over Type Open Showcases (MRN series) With drainage tank

Refrigeration type Event case MRN-O series -3~20°C Fresh meat and fresh fish/Chilled foods/Dessert/Boxed meal



### MRN-61RJSOR

●Exterior dimensions : W1,790 × D900 × H890mm



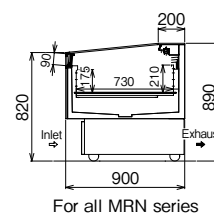
### MRN-51RJSOR

●Exterior dimensions : W1,490 × D900 × H890mm



### MRN-41RJSOR

●Exterior dimensions : W1,190 × D900 × H890mm



Freezer/Refrigeration switchable (settings) -25~-5°C Ice cream/Fresh meat and fresh fish/Chilled foods | -20~-5°C Frozen foods/Fresh meat and fresh fish/Chilled foods



### MRN-61PJTOR

●Exterior dimensions : W1,790 × D900 × H890mm



### MRN-51PJTOR

●Exterior dimensions : W1,490 × D900 × H890mm



### MRN-41SJSOR

●Exterior dimensions : W1,190 × D900 × H890mm

Remote type showcase

Plug-In type showcase

Remote type showcase

Plug-In type showcase



## Glass Door display case

Refrigeration type **Deluxe MRS-G Type** \*Custom orders for [-5°C~10°C refrigeration type] also possible. \*Can be converted to wood grain finish **-1~10°C**



**Thin type**  
depth 650mm  
Single phase  
**MRS-20GWSR6**

- Exterior dimensions: W600 × D650 × H1,900mm
- Effective interior volume: 319L
- Product mass (weight): 115kg
- Cooling unit: Closed Air-cooled 300W nominal output
- Power consumption during cooling: Single phase 100V 430/370W 50/60Hz
- Power consumption during defrost: Single phase 100V 144/144W 50/60Hz



**Thin type**  
depth 650mm  
Single phase Order  
Dual power Order  
**MRS-40GWSR5**  
**[MRS-40GWTR5]**

- Exterior dimensions: W1,200 × D650 × H1,900mm
- Effective interior volume: 703L ●Product mass (weight): 190kg
- Cooling unit: Closed Air-cooled 400W nominal output
- Power consumption during cooling: Single phase 100V 720/630W 50/60Hz
- Power consumption during defrost: Single phase 100V 320/320W 50/60Hz



**Thin type**  
depth 650mm  
Dual power  
**MRS-60GWSR6**

- Exterior dimensions: W1,800 × D650 × H1,900mm
- Effective interior volume: 1,086L
- Product mass (weight): 280kg
- Cooling unit: Closed Air-cooled 600W nominal output
- Power consumption during cooling: Single phase 100V 510/510W 50/60Hz
- Power consumption during defrost: Single phase 100V 510/510W 50/60Hz



**Thick type**  
depth 800mm  
Dual power Order  
**MRF-40GMTR5**

- Exterior dimensions: W1,200 × D800 × H1,900mm



**Thick type**  
depth 800mm  
Dual power Order  
**MRF-60GMTR6**

- Exterior dimensions: W1,800 × D800 × H1,900mm

Freezer type **Deluxe MRS-F Type** Automatic drain evaporator \*Can be converted to wood grain finish **under -20°C**



**Thin type**  
depth 650mm  
Dual power  
**MRS-20FWTR6**

- Exterior dimensions: W600 × D650 × H1,900mm
- Effective interior volume: 292L
- Product mass (weight): 150kg
- Cooling unit: Closed Air-cooled 750W nominal output
- Power consumption during cooling: Single phase 100V 212/201W 50/60Hz
- Power consumption during defrost: Single phase 100V 277/267W 50/60Hz



**Thin type**  
depth 650mm  
Dual power Order  
**MRS-40FWTR6**

- Exterior dimensions: W1,200 × D650 × H1,900mm
- Effective interior volume: 643L ●Product mass (weight): 250kg
- Cooling unit: Closed Air-cooled 1,100W nominal output
- Power consumption during cooling: Single phase 100V 490/500W 50/60Hz
- Power consumption during defrost: Single phase 100V 670/650W 50/60Hz



**Thin type**  
depth 650mm  
Dual power Order  
**MRS-60FWTR5**

- Exterior dimensions: W1,800 × D650 × H1,900mm
- Effective interior volume: 993L ●Product mass (weight): 350kg
- Cooling unit: Closed Air-cooled 1,500W nominal output
- Power consumption during cooling: Single phase 100V 670/670W 50/60Hz
- Power consumption during defrost: Single phase 100V 1,010/1,010W 50/60Hz



**Thick type**  
depth 800mm  
Dual power Order  
**MRF-40FMTR6**

- Exterior dimensions: W1,200 × D800 × H1,900mm



**Thick type**  
depth 800mm  
Dual power Order  
**MRF-60FMTR5**

- Exterior dimensions: W1,800 × D800 × H1,900mm

Specialized Wine Reach-In **Thin depth 650mm** Showcase interior humidity is 70% or greater **5~20°C**

The secret to enjoying wine is controlling its temperature. By storing the wine in ideal temperature conditions, create a wine department that wine lovers will always go.

Single phase Order  
**MWS-20GMSR6**

- Exterior dimensions: W600 × D650 × H1,900mm
- Effective interior volume: 319L ●Product mass (weight): 115kg
- Cooling unit: Closed Air-cooled 300W nominal output
- Power consumption during cooling: Single phase 100V 370/420W 50/60Hz
- Power consumption during defrost: Single phase 100V 194/194W 50/60Hz



Dual power Order  
**MWS-40GMTR5**

- Exterior dimensions: W1,200 × D650 × H1,900mm
- Effective interior volume: 703L ●Product mass (weight): 190kg
- Cooling unit: Closed Air-cooled 400W nominal output
- Power consumption during cooling: Single phase 100V 280/280W 50/60Hz
- Power consumption during defrost: Single phase 100V 205/205W 50/60Hz



**Capacity 36 bottles**  
Incorporates a vibration absorption function  
Incorporates a UV ray absorbing lamp

**Capacity 72 bottles**  
Incorporates a vibration absorption function  
Incorporates a UV ray absorbing lamp

\*We recommend wrapping bottles in cellophane before shelving imported and expensive wine in order to protect the labels. \*Shelves are suitable for bottles under 80mm in diameter. \*Wine shelves also available.

Description of icons: Single phase 100V, Three phase 200V, Dual power, Requires dual power sources, Lighting, Includes lighting for all shelves, Glass shelves, Slide, Sliding shelves, Order, Built to order

## Ice-maker (cube ice and cell type)

Thanks to our company unique injection tube part structure, water is circulating well and ice is ready with less impurities.

Auger type chip ice under-counter type

**Ice-maker 100kg type** Single phase  
**FIC-A100CT**

- Exterior dimensions: W600×D600×H800mm
- Ice-making capacity: Approx. 90/100kg per day (Room temperature 20°C, water temperature 15°C)
- Ice storage amount: Approx. 34kg (Approx. 28kg at the time of natural dropping)
- Product mass: 61kg
- Power consumption: 424/451W
- Water amount consumption: Approx. 0.10/0.11m³ per day (50/60Hz) (Room temperature 20°C, water temperature 15°C)

Powerful ice-making capacities with a compact size

Slim-type vertical type

**Ice-maker 240kg / Ice storage 110kg type** Three phase  
**FIC-A240KV1S**

- Exterior dimensions: W700×D670×H1,640mm
- Product mass: 150kg
- Ice-making capacity: Approx. 235/250kg per day (Room temperature 20°C, water temperature 15°C)
- Ice storage amount: Approx. 110kg (Approx. 85kg at the time of natural dropping)
- Power consumption: 1,020/1,205W
- Water amount consumption: Approx. 0.42/0.45m³ per day (50/60Hz) (Room temperature 20°C, water temperature 15°C)

Stack on slim type

**240kg type** Three phase Order  
**FIC-A240KSSFT**

- Exterior dimensions: W700×D700×H1,850mm
- Ice-making capacity: Approx. 240/255kg per day (Room temperature 20°C, water temperature 15°C)
- Ice storage amount: Approx. 115kg (Approx. 100kg at the time of natural dropping)
- Product mass: 146kg
- Power consumption: 1,060/1,245W
- Water amount consumption: Approx. 0.48/0.50m³ per day (50/60Hz) (Room temperature 20°C, water temperature 15°C)

Under-counter type

**95kg type** Single phase  
**FIC-A95KT**

- Exterior dimensions: W1,000×D600×H800mm
- Ice-making capacity: Approx. 88/97kg per day (Room temperature 20°C, water temperature 15°C)
- Ice storage amount: Approx. 45.9kg (Approx. 22.2kg at the time of natural dropping)
- Ice-making system: Cell-type Jet-spray type
- Product mass: 80kg
- Power consumption: 495/540W

## Refrigerated Cold Locker (coin type) Standardly equipped with plasma light deodorizing equipment



Installation example

Return type  
Indoor temperature 2~12°C  
**Cold Locker**  
Order Single phase  
**HPM-8RR9**  
(Using 100 yen coins)  
●Exterior dimensions: W1,000×D544 (569) × H1,815mm  
●Effective unobstructed capacity: 36L x 8 spaces (Total : 288L)

Return type and glass door  
Indoor temperature 2~12°C  
**Cold Locker**  
Order Single phase  
**HPM-8RR9-G**  
(Using 100 yen coins)  
●Exterior dimensions: W1,000×D544 (569) × H1,815mm  
●Effective unobstructed capacity: 36L x 8 spaces (Total : 288L)

\*Other models of coin type (pay-type) and key type lockers are also available.

Remote type showcase

Plug-In type showcase



A series of horizontal dotted lines for writing, occupying the left half of the page.

A series of horizontal dotted lines for writing, occupying the right half of the page.